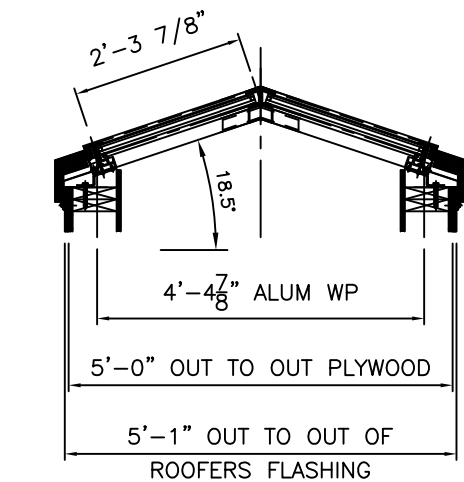
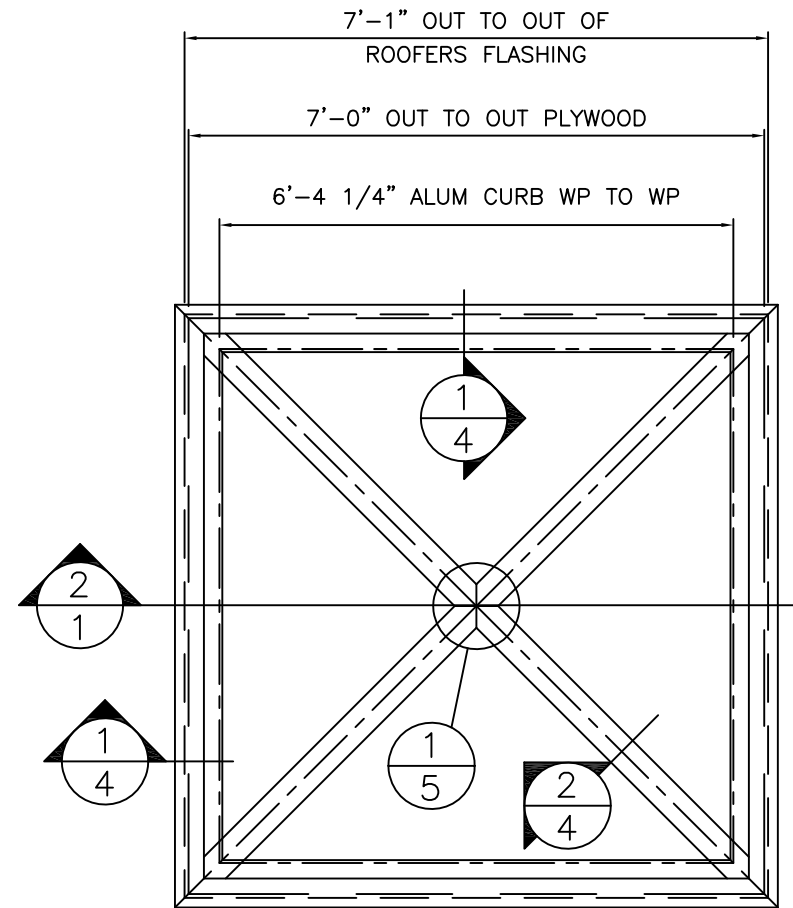


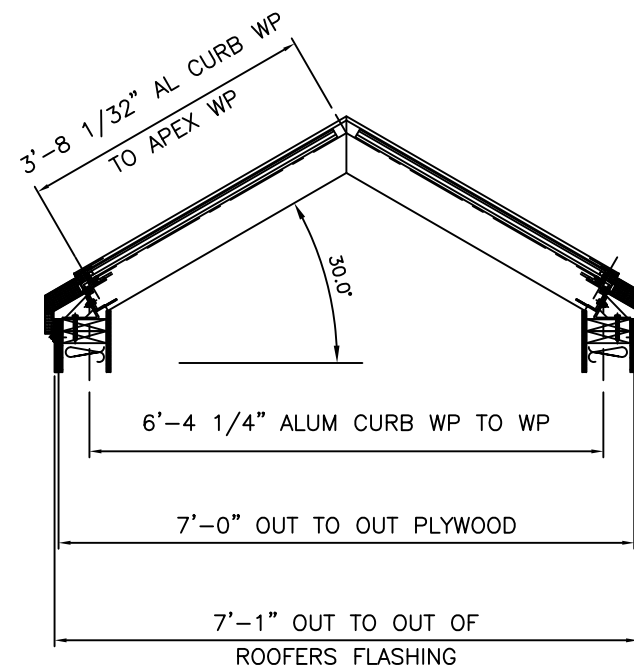
ROOF PLAN SKI



1
1 **SECT THRU SKI**



ROOF PLAN SK2



2
1 **SECT THRU SK2**

GENERAL NOTES

- ALUMINUM : EXTRUDED ALLOY 6063-T5 & 6 FOR FRAMING MEMBERS, CLAMPING BARS, ETC. BASE PLATES, LUGS, FLASHINGS, ETC. TO BE 3003-H14 UTILITY GRADE (WHERE EXPOSED TO MATCH SKYLIGHT FINISH).
- GLAZING GASKETS : EXTRUDED EPDM GASKETS (BLACK) FOR INT. & EXT. SEALS @ SNAP CAPS
- GLAZING TAPE : TREMCO .150 X 3/8 X 1/8" POLYSHIM AT HORIZONTAL LOW PROFILE CLAMPS
- SEALANT : MEDIUM MODULUS, NEUTRAL CURE SILICONE SEALANT FOR GENERAL USE & AT ALL CLAMPING BAR JOINTS (1/8" GAPS TYPICALLY) - TREMCO TREMSIL 600
- AIRSEALS : PURLIN TO RAFTER NOTCH - 1/32" VHB TAPE
ALUMINUM FLASHINGS PERIMETER SEAL - TREMCO TREMSIL 600
6" LAP JOINTS AT ALL INTERIOR & EXTERIOR FLASHINGS - TREMCO TREMSIL 600
- BACKER ROD : CLOSED CELL POLYETHYLENE ROPE BACK-UP WHERE JOINT BACK-UP IS REQUIRED (TREMCO "SOF " ROD)
- SETTING BLOCKS : 3/16" THK. HARD NEOPRENE BLOCKS 3" LG. LOCATED AT 1/4 PTS. OF PURLINS - BY IBG
- GLASS : 1 1/8" THK. O/A UNITS -BY IBG
EXT.: 6mm BLUE-GREEN TEMPERED
SPACER: 12.7mm ALUM ARGON FILLED
INT.: 4mm LOW-E ENERGY ADVANTAGE ANNEALED #3 + 0.060" CLEAR PVB + 4mm CLEAR ANNEALED
- INSULATION : EXTRUDED RIGID POLYSTYRENE INSULATION IN THICKNESS REQUIRED TO SANDWICH INNER AND OUTER CLOSURE FLASHINGS - TO HAVE A COMPRESSIVE STRENGTH OF 20 PSI.
- SEPARATION OF DISSIMILAR MATERIALS : TO BE ACCOMPLISHED THRU THE USE OF NEOPRENE/PVC SHIMS OR BITUMINOUS PAINT APPLIED IN THE FIELD (NEITHER OF WHICH ARE BY I.B.G)
- HARDWARE : SELF TAPPING SCREWS, MACHINE BOLTS/NUTS AND SELF DRILLING FASTENERS TO BE STAINLESS STEEL OR DOUBLE CADMIUM PLATED FOR STRENGTH REASONS TO AVOID SHEARING IN SOME LOCATIONS (SPECIFICALLY TEKS AND PURLINS SCREWS)
- FINISH : EXPOSED INT. & EXT. COMPONENTS TO BE DURANAR BLACK CLASSIC UC40577

NOT IN IBG'S CONTRACT :

- ALL BUILT UP SILL CURBS & MATERIALS
- AIR VAPOUR MEMBRANES, ROOFING MAT'L'S
- FIELD ERECTION/LABOUR
- CAULKING, BACKER RODS, SHIMS
- INTERNAL SILL COPINGS OR DRIP PANS

BUILT-UP CURBS (NOT BY IBG) TO HAVE SUFFICIENT STRENGTH & RIGIDITY TO WITHSTAND THE FORCES EXERTED BY SKYLIGHTS

CONTRACTOR TO VERIFY OR SUPPLY ALL DIMENSIONS RELATING TO SKYLIGHTS SO FIRM FABRICATION GEOMETRY CAN BE ESTABLISHED

DATE:	REVISION	BY:

ALL DRAWINGS, DESIGNS, SPECIFICATIONS AND COPIES FURNISHED BY IBG CANADA LTD. ARE AND SHALL REMAIN AS ITS EXCLUSIVE PROPERTY AND ARE NOT TO BE USED ON ANY OTHER PROJECT OR REPRODUCED, COPIED, ALTERED AND MODIFIED IN WHOLE OR IN PART AND FOR WHATEVER PURPOSE INTENDED WITHOUT THE WRITTEN CONSENT OF THE OWNER (IBG CANADA LTD.). THEY ARE TO BE RETURNED TO IBG CANADA LTD. UPON REQUEST OR UPON THE COMPLETION OF THE PROJECT.

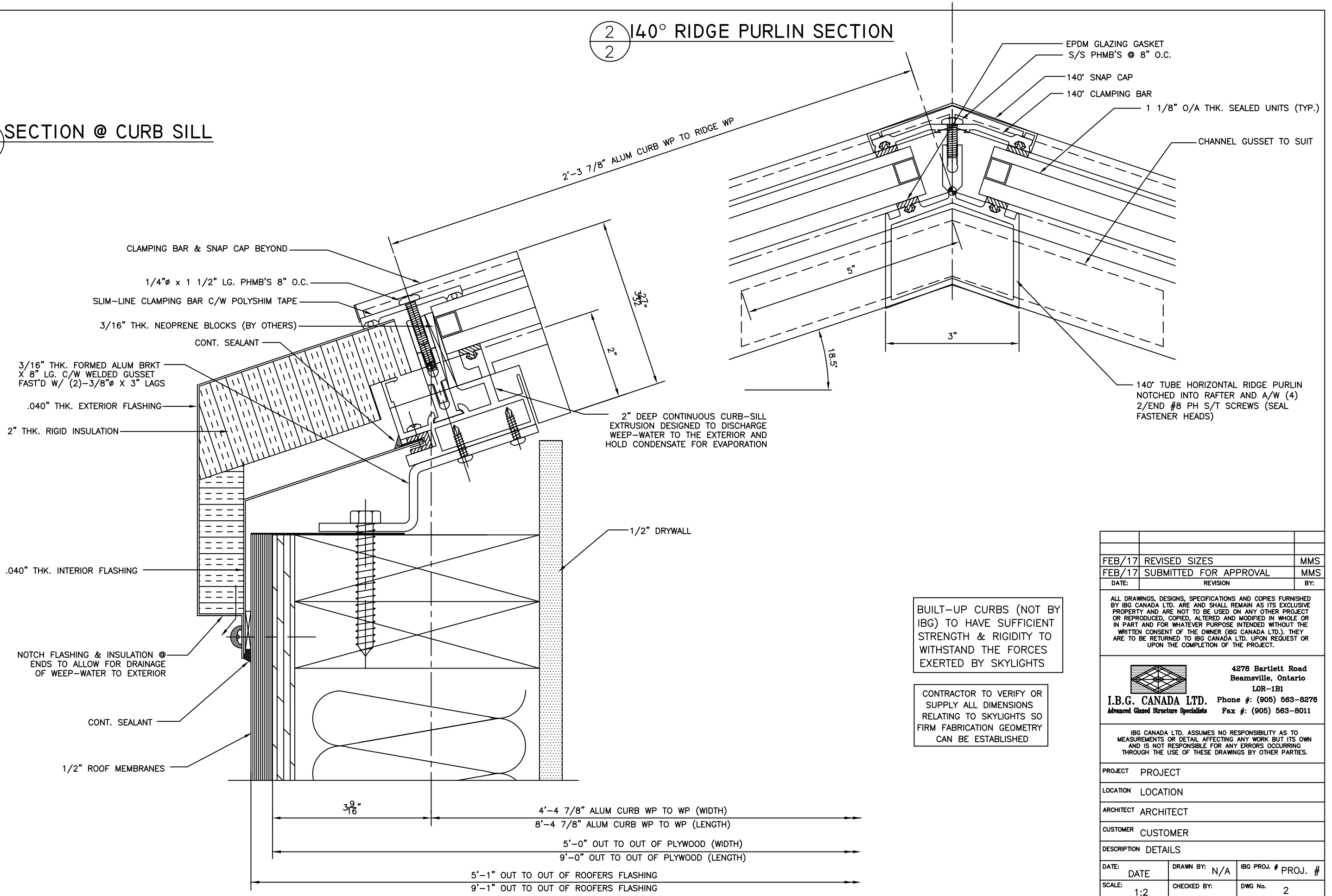
I.B.G. CANADA LTD. 4278 Bartlett Road
Beamsville, Ontario L0R-1B1
Phone #: (905) 563-8276
Advanced Glazed Structure Specialists Fax #: (905) 563-8011

IBG CANADA LTD. ASSUMES NO RESPONSIBILITY AS TO MEASUREMENTS OR DETAIL AFFECTING ANY WORK BUT ITS OWN AND IS NOT RESPONSIBLE FOR ANY ERRORS OCCURRING THROUGH THE USE OF THESE DRAWINGS BY OTHER PARTIES.

PROJECT	PROJECT				
LOCATION	LOCATION				
ARCHITECT	ARCHITCT				
CUSTOMER	CUSTOMER				
DESCRIPTION	ROOF PLANS & SECTIONS				
DATE:	DATE	DRAWN BY:	N/A	IBG PROJ. #	PROJ. #
SCALE:	1"=1'-0"	CHECKED BY:		DWG No.	1

2 140° RIDGE PURLIN SECTION

1 SECTION @ CURB SILL



BUILT-UP CURBS (NOT BY IBG) TO HAVE SUFFICIENT STRENGTH & RIGIDITY TO WITHSTAND THE FORCES EXERTED BY SKYLIGHTS

CONTRACTOR TO VERIFY OR SUPPLY ALL DIMENSIONS RELATING TO SKYLIGHTS SO FIRM FABRICATION GEOMETRY CAN BE ESTABLISHED

FEB/17	REVISED SIZES	MMS
FEB/17	SUBMITTED FOR APPROVAL	MMS
DATE:	REVISION	BY:

ALL DRAWINGS, DESIGNS, SPECIFICATIONS AND COPIES FURNISHED BY IBG CANADA LTD. ARE AND SHALL REMAIN AS ITS EXCLUSIVE PROPERTY AND ARE NOT TO BE USED ON ANY OTHER PROJECT OR REPRODUCED, COPIED, ALTERED AND MODIFIED IN WHOLE OR IN PART AND FOR WHATEVER PURPOSE INTENDED WITHOUT THE WRITTEN CONSENT OF THE OWNER (IBG CANADA LTD.). THEY ARE TO BE RETURNED TO IBG CANADA LTD. UPON REQUEST OR UPON THE COMPLETION OF THE PROJECT.

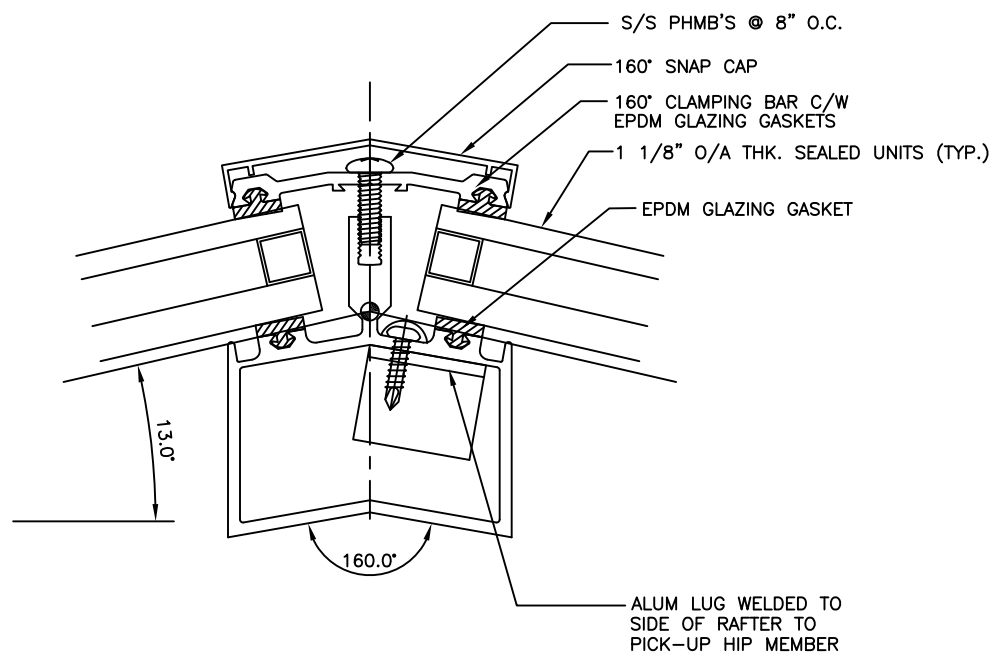
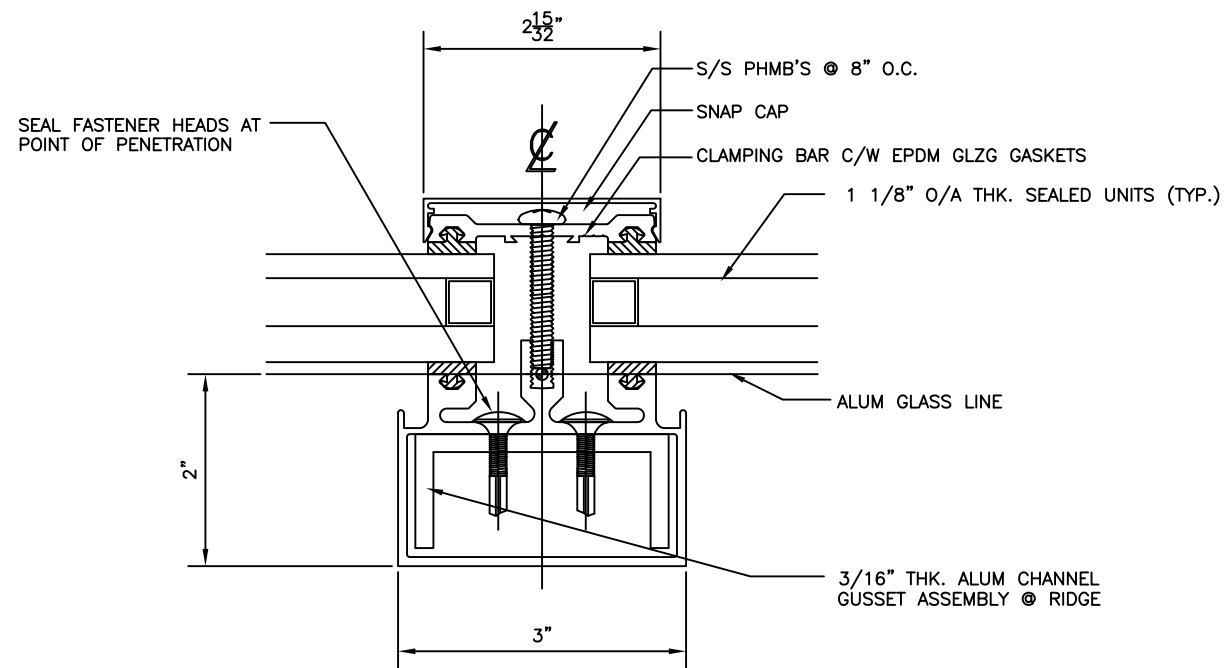
I.B.G. CANADA LTD. 4278 Bartlett Road
 Beamsville, Ontario LOR-1B1
 Phone #: (905) 563-8278
 Fax #: (905) 563-8011

IBG CANADA LTD. ASSUMES NO RESPONSIBILITY AS TO MEASUREMENTS OR DETAIL AFFECTING ANY WORK BUT ITS OWN AND IS NOT RESPONSIBLE FOR ANY ERRORS OCCURRING THROUGH THE USE OF THESE DRAWINGS BY OTHER PARTIES.

PROJECT	PROJECT
LOCATION	LOCATION
ARCHITECT	ARCHITECT
CUSTOMER	CUSTOMER
DESCRIPTION	DETAILS

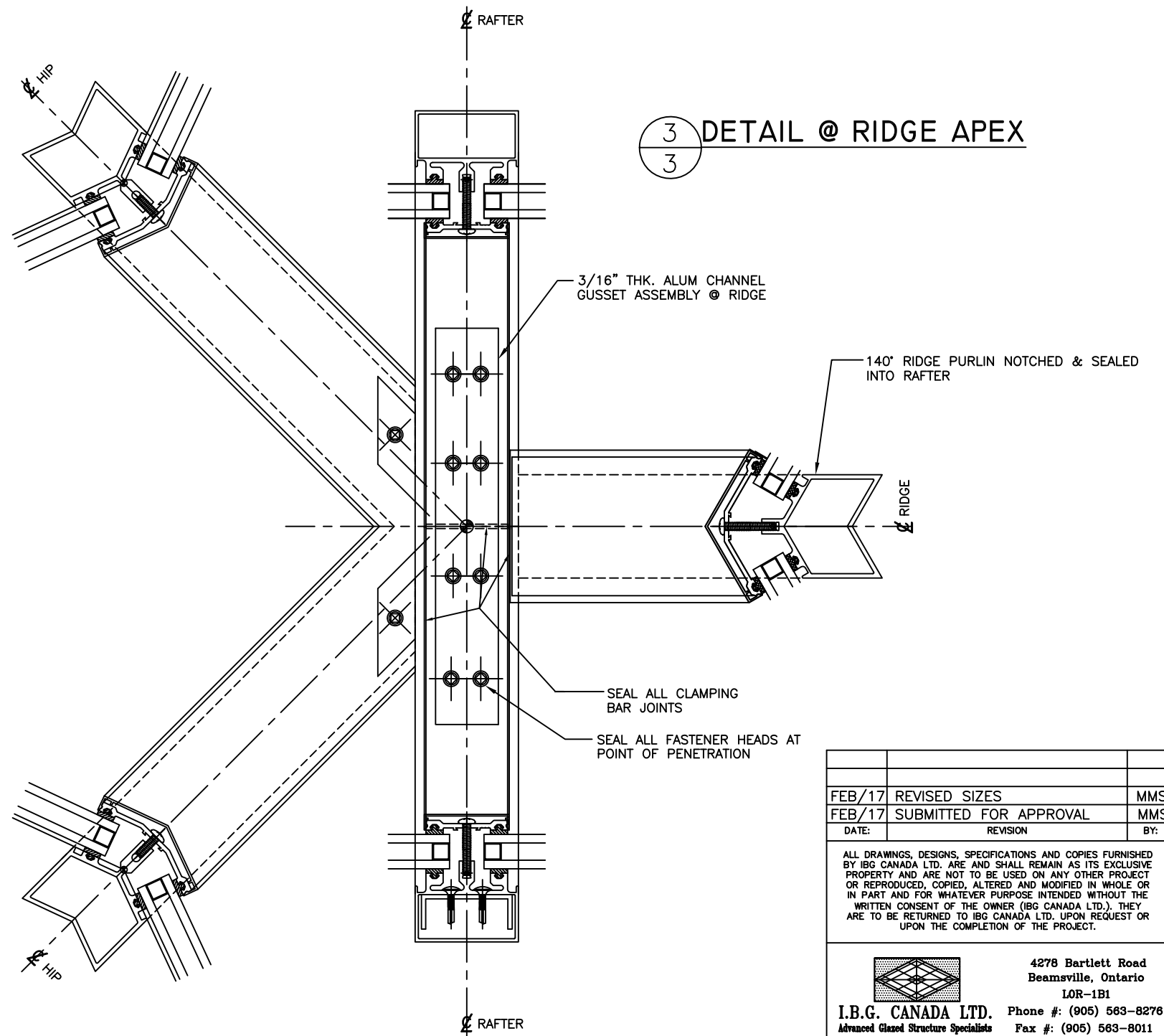
DATE:	DATE	DRAWN BY:	N/A	IBG PROJ. #	PROJ. #
SCALE:	1:2	CHECKED BY:		DWG No.	2

1 SECTION @ RAFTER



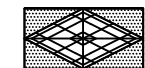
2 SECTION @ HIP PURLIN

3 DETAIL @ RIDGE APEX



FEB/17	REVISED SIZES	MMS
FEB/17	SUBMITTED FOR APPROVAL	MMS
DATE:	REVISION	BY:

ALL DRAWINGS, DESIGNS, SPECIFICATIONS AND COPIES FURNISHED BY I.B.G. CANADA LTD. ARE AND SHALL REMAIN AS ITS EXCLUSIVE PROPERTY AND ARE NOT TO BE USED ON ANY OTHER PROJECT OR REPRODUCED, COPIED, ALTERED AND MODIFIED IN WHOLE OR IN PART AND FOR WHATEVER PURPOSE INTENDED WITHOUT THE WRITTEN CONSENT OF THE OWNER (I.B.G. CANADA LTD.). THEY ARE TO BE RETURNED TO I.B.G. CANADA LTD. UPON REQUEST OR UPON THE COMPLETION OF THE PROJECT.



4278 Bartlett Road
Beamsville, Ontario
L0R-1B1
I.B.G. CANADA LTD. Phone #: (905) 563-8276
Advanced Glazed Structure Specialists Fax #: (905) 563-8011

I.B.G. CANADA LTD. ASSUMES NO RESPONSIBILITY AS TO MEASUREMENTS OR DETAIL AFFECTING ANY WORK BUT ITS OWN AND IS NOT RESPONSIBLE FOR ANY ERRORS OCCURRING THROUGH THE USE OF THESE DRAWINGS BY OTHER PARTIES.

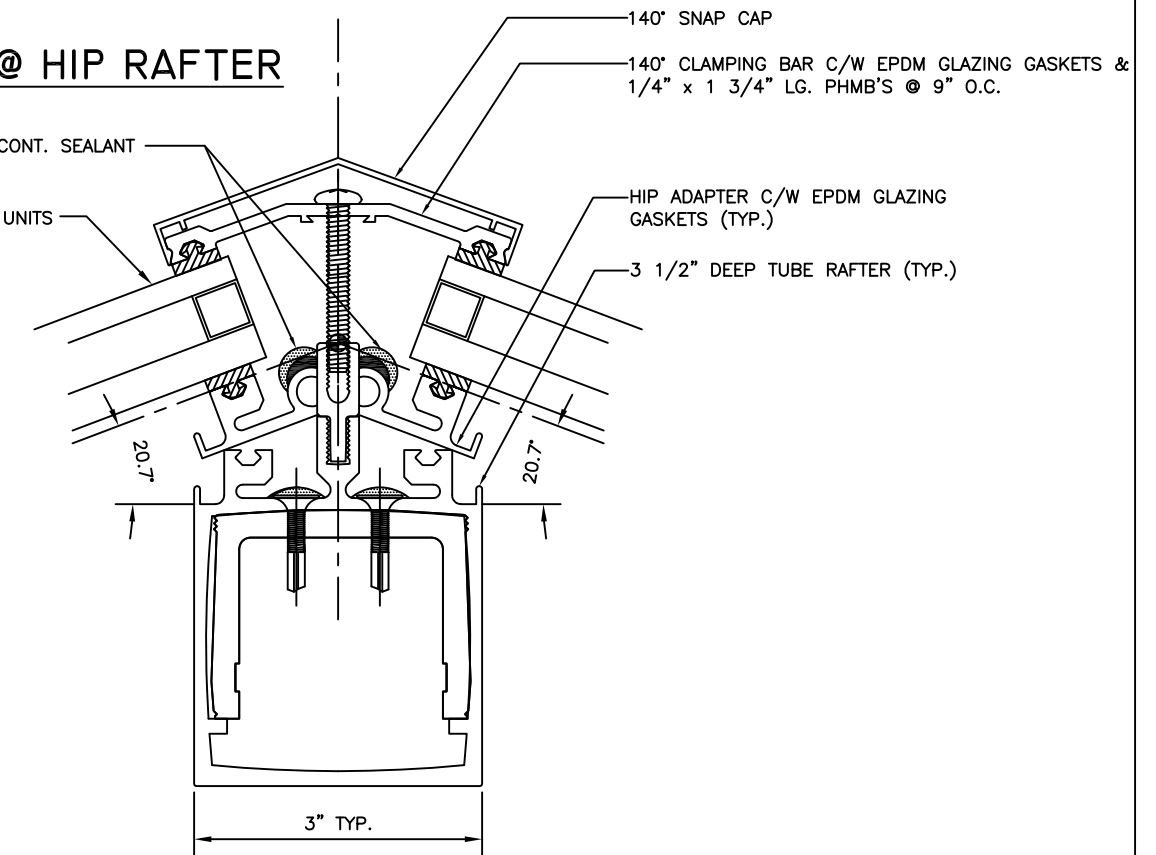
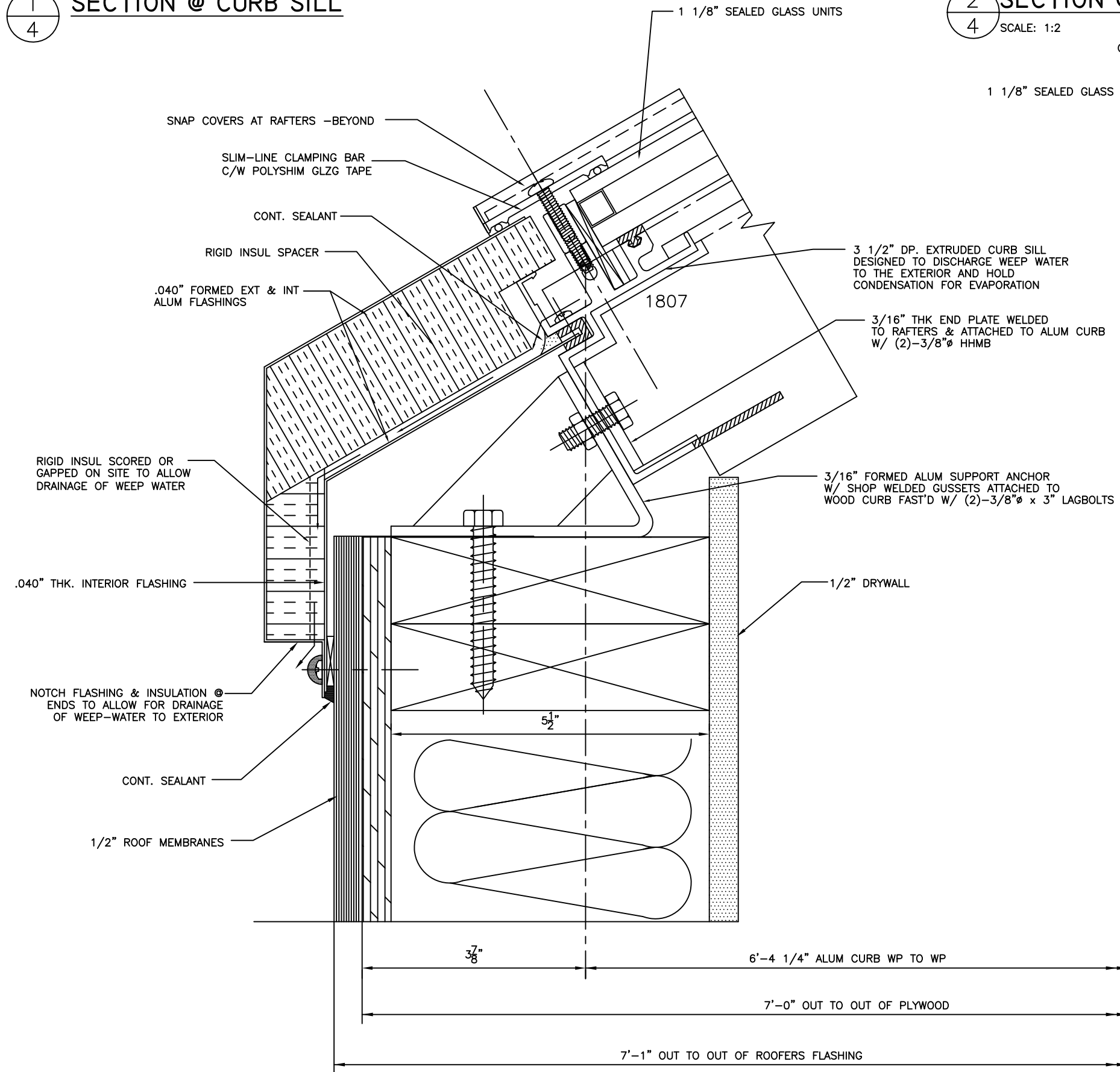
PROJECT	PROJECT	
LOCATION	LOCATION	
ARCHITECT	ARCHITECT	
CUSTOMER	CUSTOMER	
DESCRIPTION	DETAILS	
DATE:	DRAWN BY:	IBG PROJ. # PROJ. #
DATE	N/A	
SCALE:	CHECKED BY:	DWG No. 3
1:2		

1 SECTION @ CURB SILL

2 SECTION @ HIP RAFTER

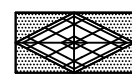
1
4

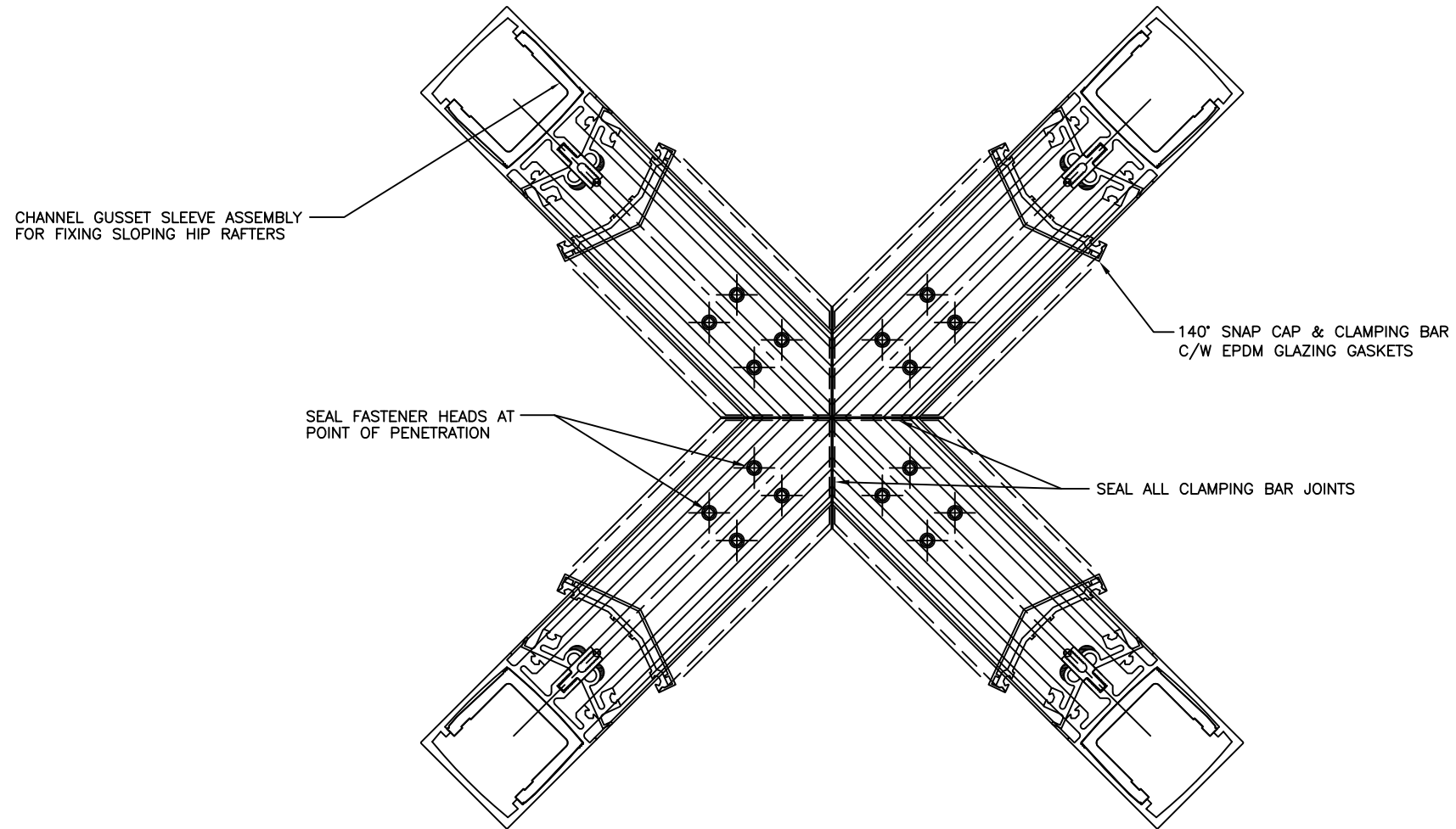
2
4



BUILT-UP CURBS (NOT BY IBG) TO HAVE SUFFICIENT STRENGTH & RIGIDITY TO WITHSTAND THE FORCES EXERTED BY SKYLIGHTS

CONTRACTOR TO VERIFY OR SUPPLY ALL DIMENSIONS RELATING TO SKYLIGHTS SO FIRM FABRICATION GEOMETRY CAN BE ESTABLISHED

FEB/17	REVISED SIZES	MMS
FEB/17	SUBMITTED FOR APPROVAL	MMS
DATE:	REVISION	BY:
<p>ALL DRAWINGS, DESIGNS, SPECIFICATIONS AND COPIES FURNISHED BY IBG CANADA LTD. ARE AND SHALL REMAIN AS ITS EXCLUSIVE PROPERTY AND ARE NOT TO BE USED ON ANY OTHER PROJECT OR REPRODUCED, COPIED, ALTERED AND MODIFIED IN WHOLE OR IN PART AND FOR WHATEVER PURPOSE INTENDED WITHOUT THE WRITTEN CONSENT OF THE OWNER (IBG CANADA LTD.). THEY ARE TO BE RETURNED TO IBG CANADA LTD. UPON REQUEST OR UPON THE COMPLETION OF THE PROJECT.</p>		
		<p>4278 Bartlett Road Beamsville, Ontario L0R-1B1 I.B.G. CANADA LTD. Phone #: (905) 563-8276 Advanced Glazed Structure Specialists Fax #: (905) 563-8011</p>
<p>IBG CANADA LTD. ASSUMES NO RESPONSIBILITY AS TO MEASUREMENTS OR DETAIL AFFECTING ANY WORK BUT ITS OWN AND IS NOT RESPONSIBLE FOR ANY ERRORS OCCURRING THROUGH THE USE OF THESE DRAWINGS BY OTHER PARTIES.</p>		
PROJECT	PROJECT	
LOCATION	LOCATION	
ARCHITECT	ARCHITECT	
CUSTOMER	CUSTOMER	
DESCRIPTION	DETAILS	
DATE:	DRAWN BY:	IBG PROJ. # PROJ. #
SCALE:	CHECKED BY:	DWG No. 4
1:2	N/A	



1 PLAN @ APEX
5 SCALE: 1:4

FEB/17	REVISED SIZES	MMS
FEB/17	SUBMITTED FOR APPROVAL	MMS
DATE:	REVISION	BY:
<p>ALL DRAWINGS, DESIGNS, SPECIFICATIONS AND COPIES FURNISHED BY IBG CANADA LTD. ARE AND SHALL REMAIN AS ITS EXCLUSIVE PROPERTY AND ARE NOT TO BE USED ON ANY OTHER PROJECT OR REPRODUCED, COPIED, ALTERED AND MODIFIED IN WHOLE OR IN PART AND FOR WHATEVER PURPOSE INTENDED WITHOUT THE WRITTEN CONSENT OF THE OWNER (IBG CANADA LTD.). THEY ARE TO BE RETURNED TO IBG CANADA LTD. UPON REQUEST OR UPON THE COMPLETION OF THE PROJECT.</p>		
		<p>4278 Bartlett Road Beamsville, Ontario L0R-1B1</p>
<p>I.B.G. CANADA LTD. Advanced Glass Structure Specialists</p>		<p>Phone #: (905) 563-8276 Fax #: (905) 563-8011</p>
<p>IBG CANADA LTD. ASSUMES NO RESPONSIBILITY AS TO MEASUREMENTS OR DETAIL AFFECTING ANY WORK BUT ITS OWN AND IS NOT RESPONSIBLE FOR ANY ERRORS OCCURRING THROUGH THE USE OF THESE DRAWINGS BY OTHER PARTIES.</p>		
PROJECT	PROJECT	
LOCATION	LOCATION	
ARCHITECT	ARCHITECT	
CUSTOMER	CUSTOMER	
DESCRIPTION	DETAILS	
DATE:	DRAWN BY: N/A	IBG PROJ. # PROJ. #
SCALE: 1:2	CHECKED BY:	DWG No. 5