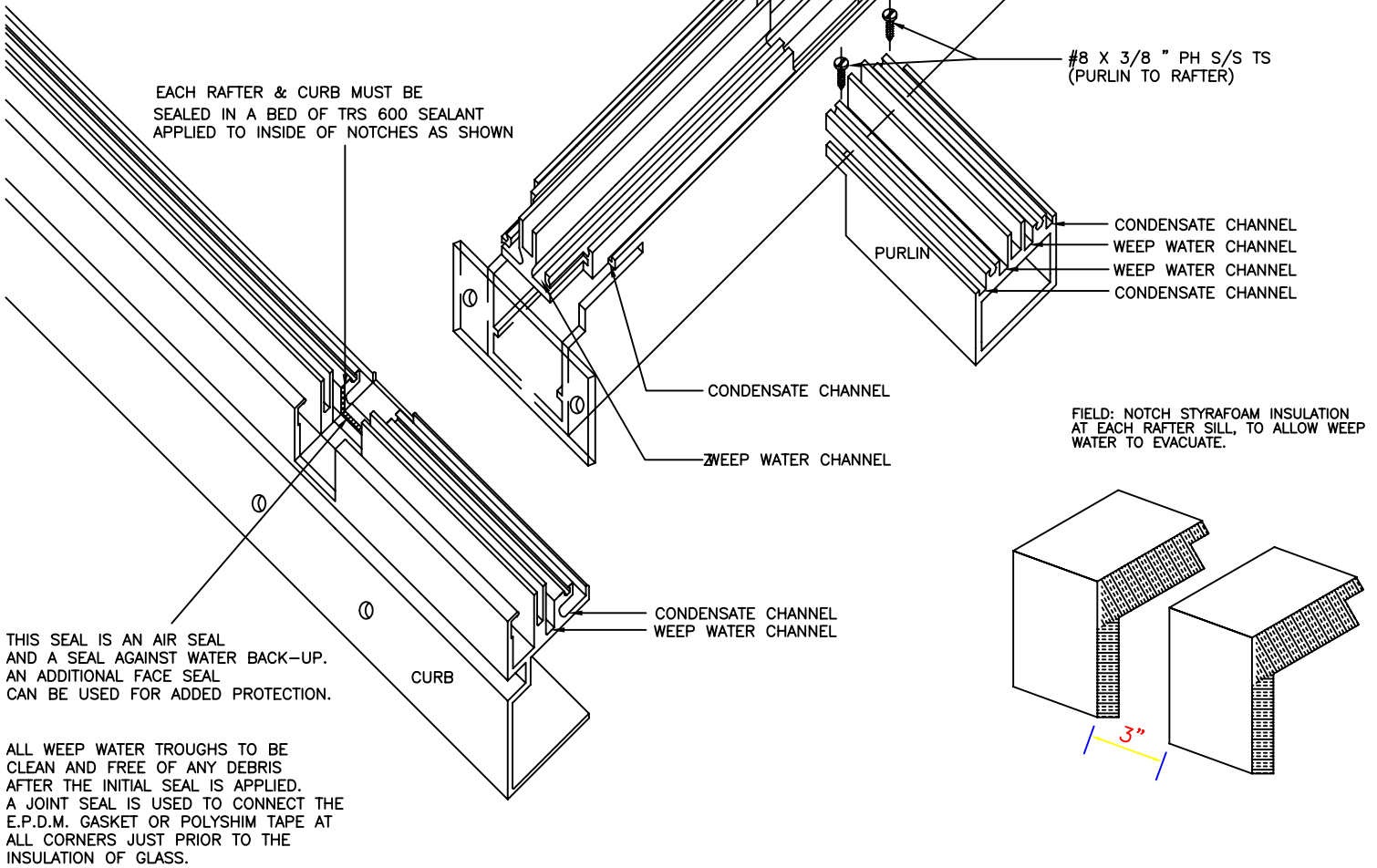


# ISOMETRIC VIEW OF PROPER INTERIOR SEALANT PROCEDURE OF ALUM. PURLINS AND CURBS

SCALE 1:2

EACH PURLIN NOTCH MUST BE SEALED  
WITH TREMCO TRS 600 SEALANT

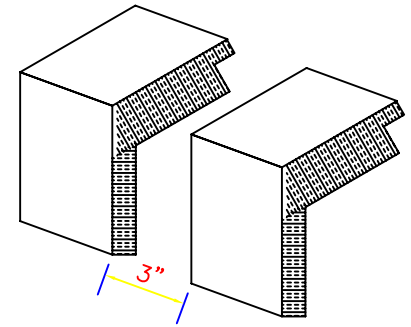
EACH RAFTER & CURB MUST BE  
SEALED IN A BED OF TRS 600 SEALANT  
APPLIED TO INSIDE OF NOTCHES AS SHOWN



THIS SEAL IS AN AIR SEAL  
AND A SEAL AGAINST WATER BACK-UP.  
AN ADDITIONAL FACE SEAL  
CAN BE USED FOR ADDED PROTECTION.

ALL WEEP WATER TROUGHS TO BE  
CLEAN AND FREE OF ANY DEBRIS  
AFTER THE INITIAL SEAL IS APPLIED.  
A JOINT SEAL IS USED TO CONNECT THE  
E.P.D.M. GASKET OR POLYSHIM TAPE AT  
ALL CORNERS JUST PRIOR TO THE  
INSULATION OF GLASS.

FIELD: NOTCH STYRAFOAM INSULATION  
AT EACH RAFTER SILL, TO ALLOW WEEP  
WATER TO EVACUATE.



# ISOMETRIC VIEW OF EXTERIOR GLAZING SHOWING PROPER EXTERIOR SILICONE SEALANT BEAD

SCALE 1:4

NOTE: CLAMPING BARS SHOWN  
WITHOUT FACE CAPS FOR CLARITY.  
SNAP ON FACE CAPS ARE AVAILABLE  
TO COVER SILICONE JOINTS AND  
CLAMPING BAR FASTENERS IF REQ'D.

