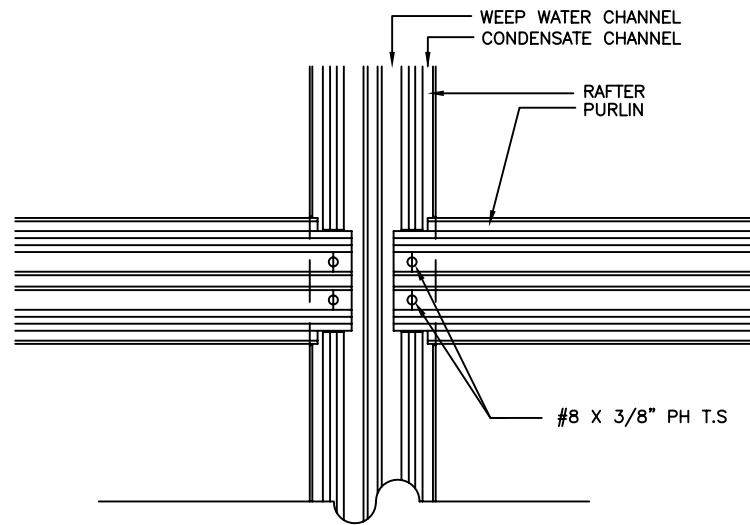


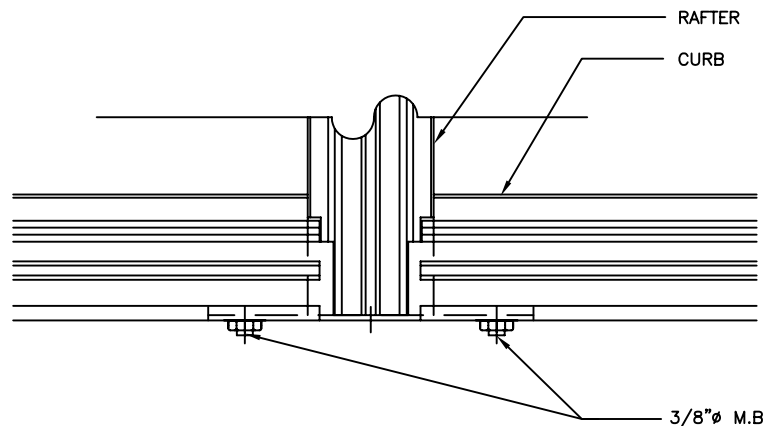
## PLAN VIEW OF PURLIN CONN. TO RAFTER

SCALE 1:2



## PLAN VIEW OF RAFTER CONN. TO CURB

SCALE 1:2



## CONDENSATE

INTERIOR CONDENSATE WATER IS CONTROLLED BY DRAINAGE INTO THE CONDENSATE CHANNELS OF THE HORIZONTAL PURLINS. THIS CONDENSATE CHANNEL DUMPS INTO THE VERTICAL RAFTER CONDENSATE CHANNEL BY MEANS OF A LAP OVER RAFTER CONDENSATE CHANNEL WHICH IN TURN RUNS DOWN & LAPS OVER THE CONDENSATE CHANNEL IN THE CURB SILL. THE CONDENSATE IS HELD IN THE CURB SILL CONDENSATE CHANNEL FOR EVAPORATION.

## WEEP WATER

ANY WATER ENTERING THE SYSTEM FROM THE EXTERIOR WILL ENTER INTO THE WEEP WATER CAVITIES. THE WEEP WATER CAVITY OF THE PURLIN LAPS OVER THE WEEP WATER CAVITY OF THE RAFTER WHICH IN TURN LAPS OVER THE WEEP WATER CAVITY OF THE CURB SILL. THE CURB SILL IS NOTCHED AT THE BACK OF THE BAR TO ALLOW WEEP WATER TO EXIT THE SYSTEM.