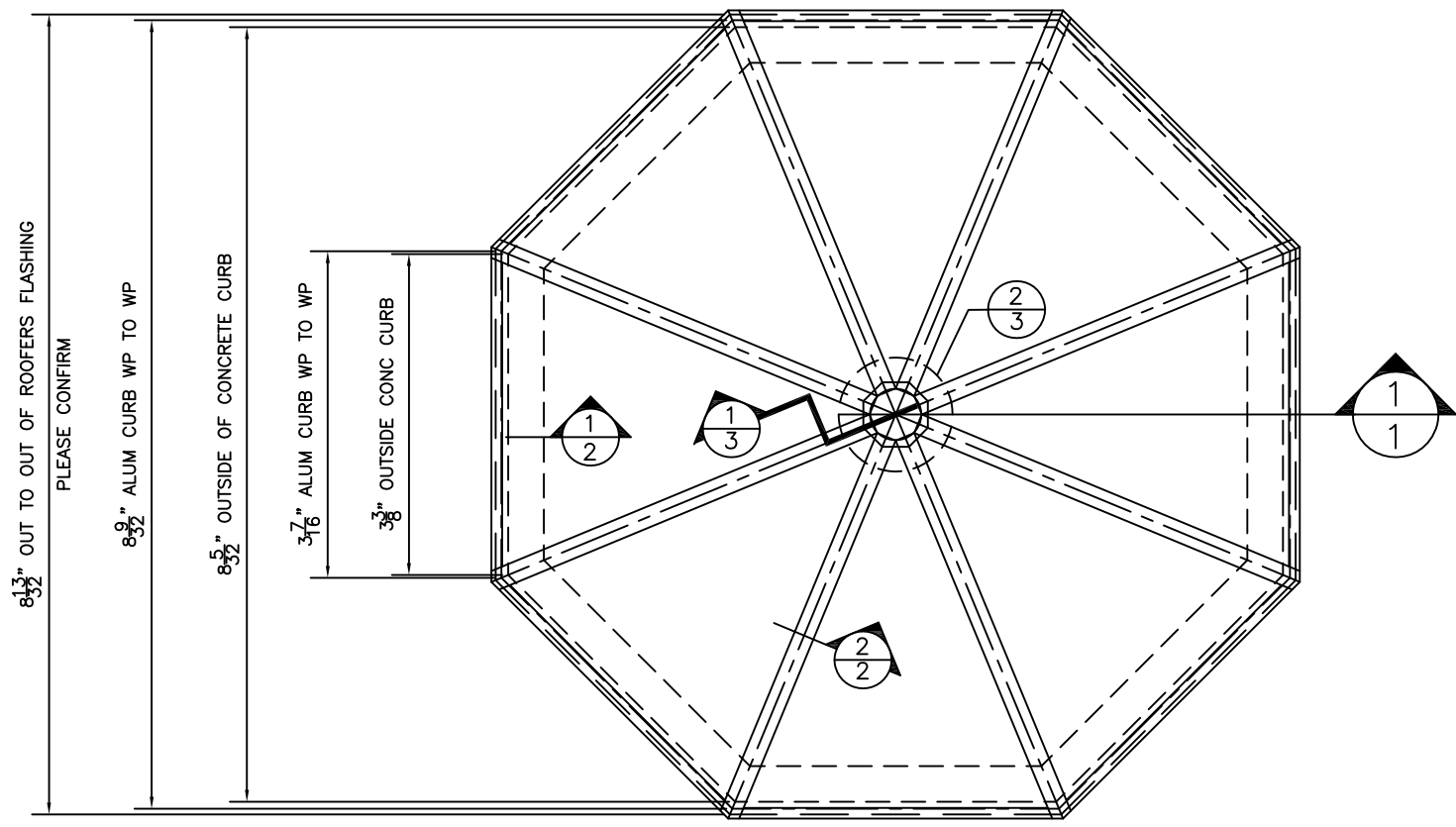
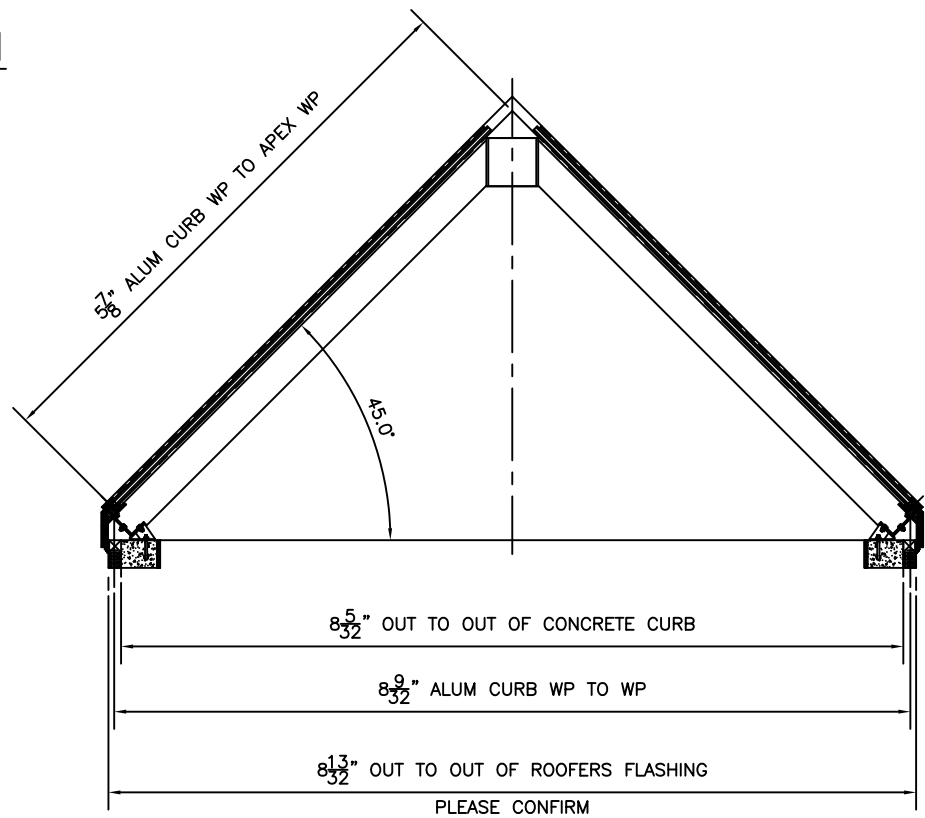


GENERAL NOTES

- ALUMINUM : EXTRUDED ALLOY 6063-T5 & 6 FOR FRAMING MEMBERS, CLAMPING BARS, ETC.
BASE PLATES, LUGS, FLASHINGS -IF EXPOSED TO BE FINISHED AS PER FRAMES
- GLAZING GASKETS : EXTRUDED EPDM GASKETS (BLACK) FOR INT. & EXT. SEALS @ SNAP CAPS
- GLAZING TAPE : TREMCO POLYSHIM II 1/8"Ø GLAZING TAPE AT LOW PROFILE CLAMPING BARS
- SEALANT : MEDIUM MODULUS, NEUTRAL CURE SILICONE SEALANT FOR GENERAL USE & AT ALL CLAMPING BAR JOINTS (1/8" GAPS TYPICALLY) - TREMSIL 600
- AIRSEALS : RAFTER TO CURB NOTCH - TREMCO TRS 600
ALUMINUM FLASHINGS PERIMETER SEAL @ GUTTER- TREMCO TRS-600
6" LAP JOINTS AT ALL INTERIOR & EXTERIOR FLASHINGS - TREMCO TRS-600
- BACKER ROD : CLOSED CELL POLYETHYLENE ROPE BACK-UP WHERE JOINT BACK-UP IS REQUIRED (TREMCO "SOF " ROD)
- SETTING BLOCKS : 3/16" THK. HARD NEOPRENE 3" LG. LOCATED AT 1/4 PTS. OF CURBS - NOT BY IBG
- GLASS : 1" THK. O/A SEALED GLASS UNITS - NOT BY IBG
- PLEASE VERIFY WITH THE MANUFACTURER FOR SIZE LIMITATIONS
- INSULATION : EXTRUDED RIGID POLYSTYRENE INSULATION IN THICKNESS REQUIRED TO SANDWICH INNER AND OUTER CLOSURE FLASHINGS
- TO HAVE A COMPRESSIVE STRENGTH OF 20 PSI.
- SPACER BLOCKS : EXTRUDED RIGID POLYSTYRENE INSULATION IN THICKNESS REQUIRED TO FILL GAPS BETWEEN CLAMPING BARS & EXTRUSION'S GLASS SEAT
- TO HAVE A COMPRESSIVE STRENGTH OF 40 PSI.
- SEPARATION OF DISSIMILAR MATERIALS : TO BE ACCOMPLISHED THRU THE USE OF NEOPRENE/PVC SHIMS OR BITUMINOUS PAINT APPLIED IN THE FIELD (NEITHER OF WHICH ARE BY I.B.G)
- HARDWARE : SELF TAPPING SCREWS, MACHINE BOLTS/NUTS AND SELF DRILLING FASTENERS TO BE STAINLESS STEEL OR DOUBLE CADMIUM PLATED FOR STRENGTH REASONS TO AVOID SHEARING IN SOME LOCATIONS (SPECIFICALLY TEKS SCREWS)
- FINISH : EXPOSED INT. & EXT. COMPONENTS TO BE 0.0004 CLEAR ANODIZED



ROOF PLAN SKI



SECTION 1/1

CONTRACTOR TO VERIFY OR SUPPLY ALL DIMENSIONS RELATING TO SKYLIGHTS SO FIRM FABRICATION GEOMETRY CAN BE ESTABLISHED

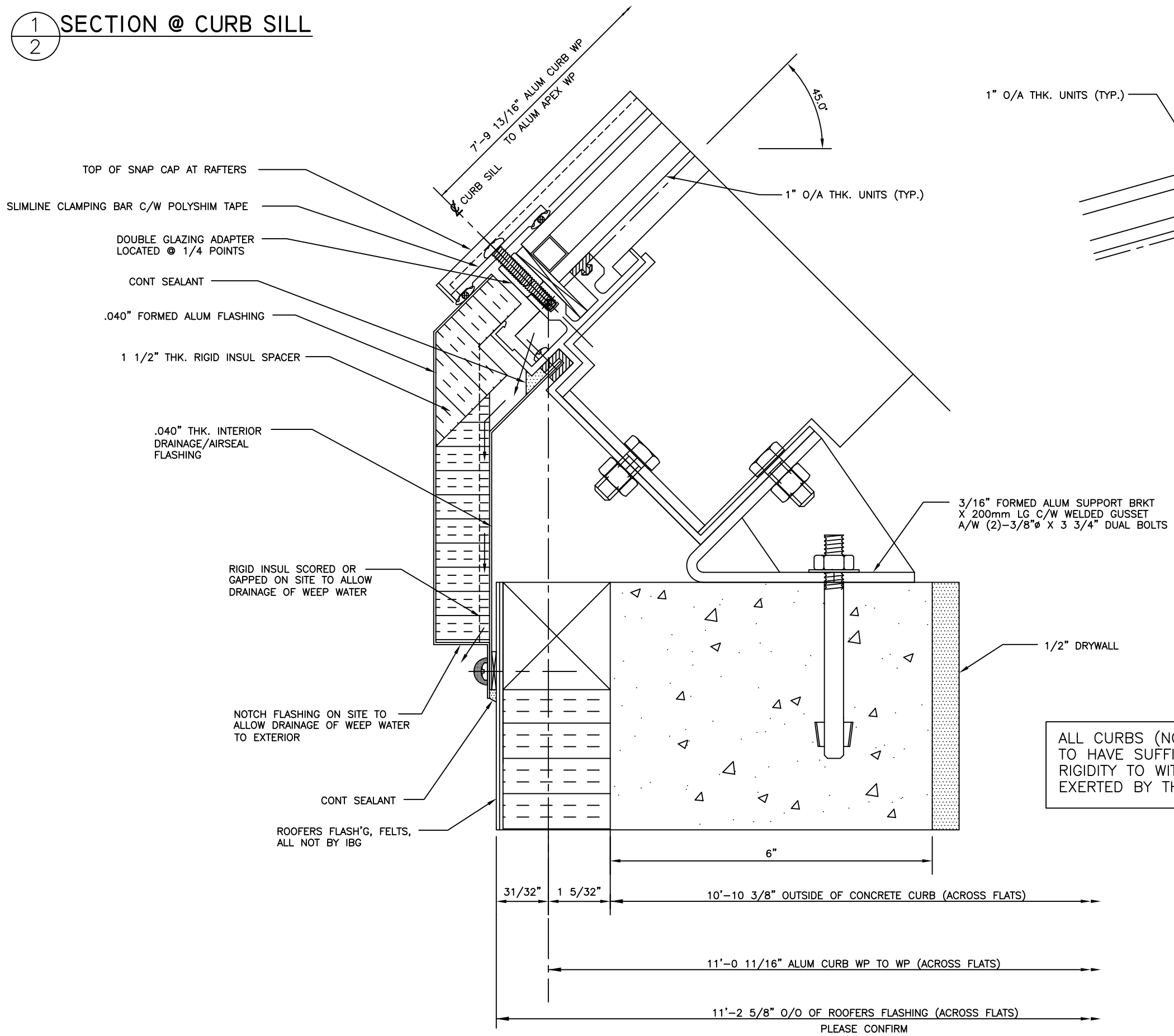
ALL CURBS (NOT BY IBG) TO HAVE SUFFICIENT STRENGTH AND RIGIDITY TO WITHSTAND THE FORCES EXERTED BY THE SKYLIGHT

NOT IN IBG'S CONTRACT :

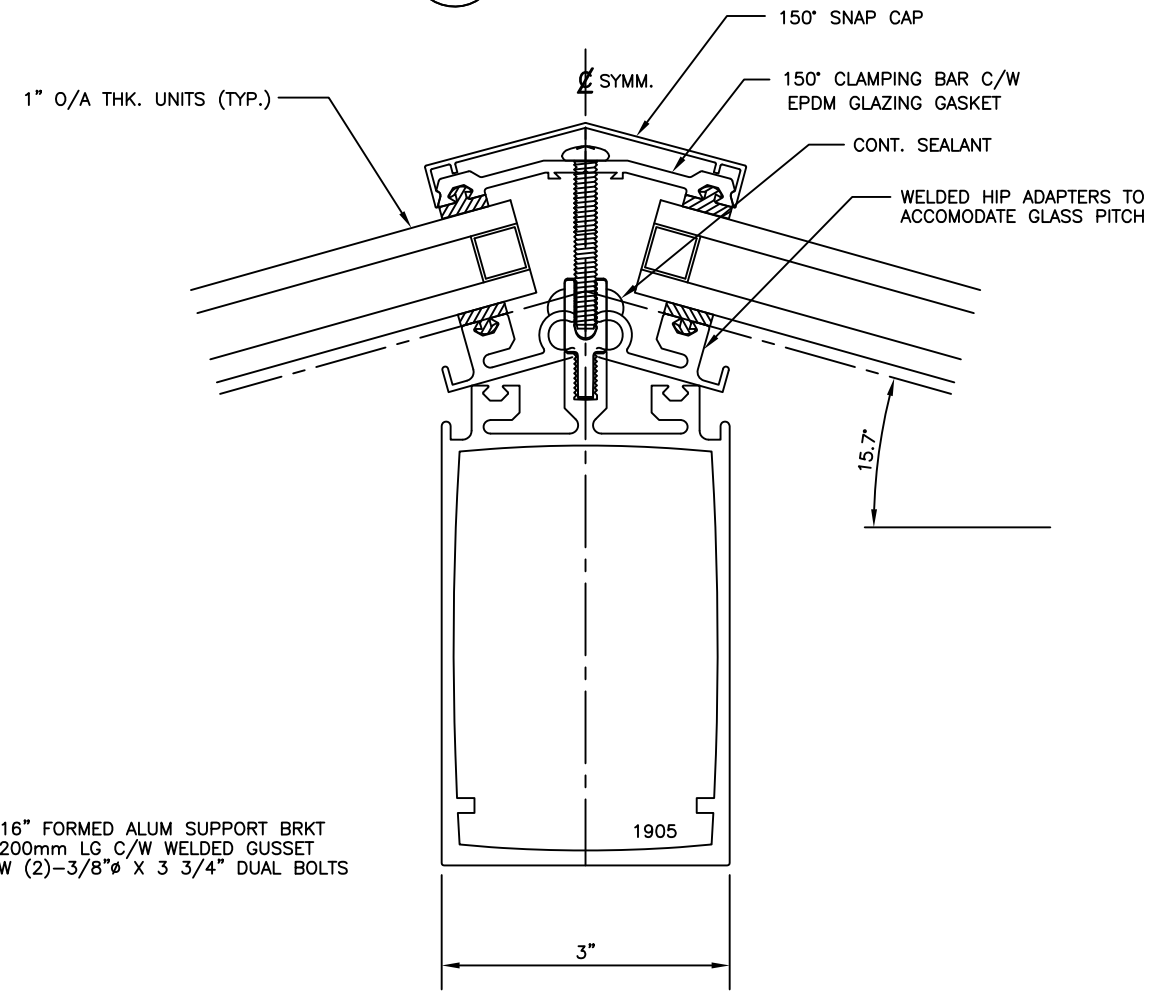
- 1" O/A SEALED GLASS UNITS
- ALL BUILT UP CURBS & MATERIALS
- AIR VAPOUR MEMBRANES, ROOFING MAT'LS
- FIELD ERECTION/LABOUR
- GLASS SETTING BLOCKS
- ALL WATERPROOF MEMBRANES
- CAULKING, BACKER RODS, SHIMS

DATE:	REVISION	BY:
ALL DRAWINGS, DESIGNS, SPECIFICATIONS AND COPIES FURNISHED BY IBG CANADA LTD. ARE AND SHALL REMAIN AS ITS EXCLUSIVE PROPERTY AND ARE NOT TO BE USED ON ANY OTHER PROJECT OR REPRODUCED, COPIED, ALTERED AND MODIFIED IN WHOLE OR IN PART AND FOR WHATEVER PURPOSE INTENDED WITHOUT THE WRITTEN CONSENT OF THE OWNER (IBG CANADA LTD.). THEY ARE TO BE RETURNED TO IBG CANADA LTD. UPON REQUEST OR UPON THE COMPLETION OF THE PROJECT.		
Head Office 4278 Bartlett Road, P.O. Box 398 Bramsville, Ontario, Canada L0R 1B0 Phone (905) 563-8276 Fax (905) 563-8011 sales@ibgcanada.ca www.ibgcanada.ca		
IBG CANADA LTD. ASSUMES NO RESPONSIBILITY AS TO MEASUREMENTS OR DETAIL AFFECTING ANY WORK BUT ITS OWN AND IS NOT RESPONSIBLE FOR ANY ERRORS OCCURRING THROUGH THE USE OF THESE DRAWINGS BY OTHER PARTIES.		
PROJECT	PROJECT	
LOCATION	LOCATION	
ARCHITECT	ARCHITECT	
CUSTOMER	CUSTOMER	
DESCRIPTION ROOF PLAN AND SECTION		
DATE: DATE	DRAWN BY: N/A	IBG PROJ. # PROJ. #
SCALE: 1 : 2	CHECKED BY:	DWG No. 1

1 SECTION @ CURB SILL
2



2 SECT THRU HIP RAFTER
2



ALL CURBS (NOT BY IBG) TO HAVE SUFFICIENT STRENGTH AND RIGIDITY TO WITHSTAND THE FORCES EXERTED BY THE SKYLIGHT

CONTRACTOR TO VERIFY OR SUPPLY ALL DIMENSIONS RELATING TO SKYLIGHTS SO FIRM FABRICATION GEOMETRY CAN BE ESTABLISHED

DATE:	REVISION	BY:
<p>ALL DRAWINGS, DESIGNS, SPECIFICATIONS AND COPIES FURNISHED BY IBG CANADA LTD. ARE AND SHALL REMAIN AS ITS EXCLUSIVE PROPERTY AND ARE NOT TO BE USED ON ANY OTHER PROJECT OR REPRODUCED, COPIED, ALTERED AND MODIFIED IN WHOLE OR IN PART AND FOR WHATEVER PURPOSE INTENDED WITHOUT THE WRITTEN CONSENT OF THE OWNER (IBG CANADA LTD.). THEY ARE TO BE RETURNED TO IBG CANADA LTD. UPON REQUEST OR UPON THE COMPLETION OF THE PROJECT.</p>		
 <p>Head Office: 4278 Bartlett Road, P.O. Box 398 Beamsville, Ontario, Canada L0R 1B0 Phone (905) 563-8276 Fax (905) 563-8011 sales@ibgcanada.ca www.ibgcanada.ca</p> <p><i>Building Today, With the Technology of Tomorrow</i></p>		
<p>IBG CANADA LTD. ASSUMES NO RESPONSIBILITY AS TO MEASUREMENTS OR DETAIL AFFECTING ANY WORK BUT ITS OWN AND IS NOT RESPONSIBLE FOR ANY ERRORS OCCURRING THROUGH THE USE OF THESE DRAWINGS BY OTHER PARTIES.</p>		
PROJECT	PROJECT	
LOCATION	LOCATION	
ARCHITECT	ARCHITECT	
CUSTOMER	CUSTOMER	
DESCRIPTION	DETAILS	
DATE:	DRAWN BY:	IBG PROJ. #
SCALE:	CHECKED BY:	PROJ. #
1 : 2	N/A	2

1
3 PARTIAL PLAN VIEW
AT APEX OF SKYLIGHT

SCALE: 1:4

TYP. HIP RAFTER ASSEMBLY WITH SHOP WELDED
INSERT PLATE FOR COMPR'N RING FIXING @ APEX

OUTLINE OF APEX COVER CAP

8 5/8" Ø O.D. ALUM COMPRESSION RING ASSEMBLY
(SEE DETAIL #2/3 FOR ADDITIONAL NOTES)

.040" ALUMINUM APEX "HAT" COVER
- A/W #8 PH S/T SCR. TO HIP CAPS
(SEAL FASTENERS AT PENETRATION)

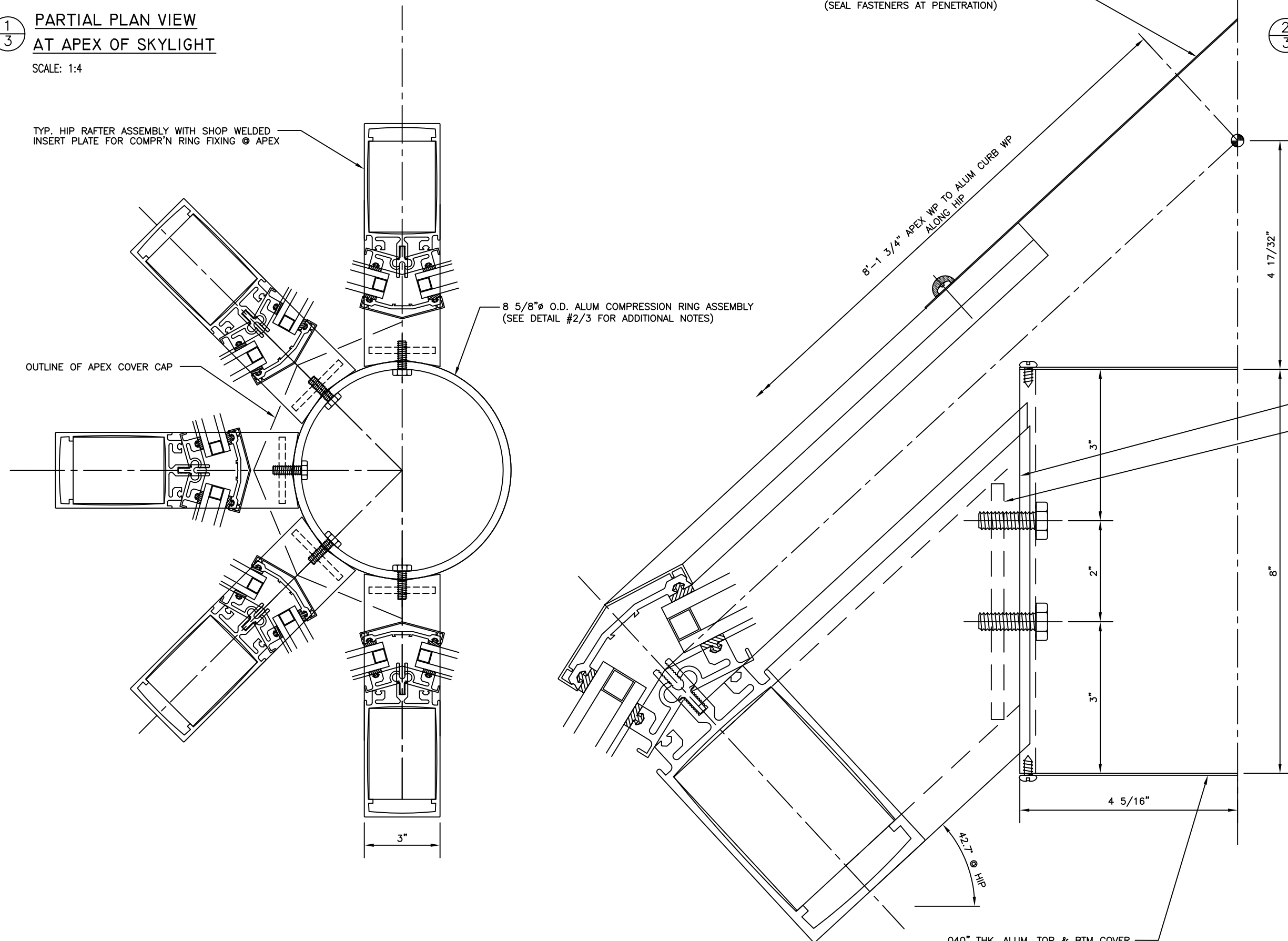
2
3 SECTION THRU COMPRESSION
RING ASSEMBLY AT APEX

8'-1 3/4" APEX WP TO ALUM CURB WP
ALONG HIP

8 5/8" Ø ALUM COMPRESSION RING

1/4" THK. ALUM. INSERT PL. SET BACK
INSIDE HIP RAFTER ASSEMBLY TUBE
- A/W (2) 3/8" X 1 1/4" HHMB

.040" THK. ALUM. TOP & BTM COVER
-A/W #8 PH'S AS SHOWN



DATE:	REVISION	BY:

ALL DRAWINGS, DESIGNS, SPECIFICATIONS AND COPIES FURNISHED BY IBC CANADA LTD. ARE AND SHALL REMAIN AS ITS EXCLUSIVE PROPERTY AND ARE NOT TO BE USED ON ANY OTHER PROJECT OR REPRODUCED, COPIED, ALTERED AND MODIFIED IN WHOLE OR IN PART AND FOR WHATEVER PURPOSE INTENDED WITHOUT THE WRITTEN CONSENT OF THE OWNER (IBC CANADA LTD.). THEY ARE TO BE RETURNED TO IBC CANADA LTD. UPON REQUEST OR UPON THE COMPLETION OF THE PROJECT.

IBG CANADA LTD
 Head Office
 4278 Bartlett Road, P.O. Box 398
 Beamsville, Ontario, Canada L0R 1B0
 Phone (905) 563-8276
 Fax (905) 563-8011
 sales@ibgcanada.ca
 www.ibgcanada.ca
Building Today, With the Technology of Tomorrow

IBC CANADA LTD. ASSUMES NO RESPONSIBILITY AS TO MEASUREMENTS OR DETAIL AFFECTING ANY WORK BUT ITS OWN AND IS NOT RESPONSIBLE FOR ANY ERRORS OCCURRING THROUGH THE USE OF THESE DRAWINGS BY OTHER PARTIES.

PROJECT	PROJECT
LOCATION	LOCATION
ARCHITECT	ARCHITECT
CUSTOMER	CUSTOMER
DESCRIPTION	DETAILS
DATE:	DATE
DRAWN BY:	N/A
IBG PROJ. #	PROJ. #
SCALE:	1 : 2
CHECKED BY:	
DWG No.	3