

**GENERAL NOTES**

ALUMINUM : EXTRUDED ALLOY 6063-T5 & 6 FOR FRAMING MEMBERS, CLAMPING BARS, CAPS, ETC. FLASHINGS, FORMED LUGS, ETC. TO BE #5005-H14 UTILITY ANODIZING QUALITY SHT.  
 - INTERIOR CLOSURE FLASHINGS - 1mm THK.  
 - EXTERIOR CLOSURE FLASHINGS - 1mm THK.  
 (WHERE EXPOSED TO BE FINISHED TO MATCH SKYLIGHT FRAMING MEMBERS & CAPS)

GLAZING GASKETS : TYPICALLY, EXTRUDED EPDM GASKET (BLACK) FOR INTERIOR & EXTERIOR SEALS POLYSHIM II TAPE REQUIRED @ SLIMLINE CLAMPING BARS

SEALANT : MEDIUM MODULUS, NEUTRAL CURE SILICONE SEALANT FOR GENERAL USE & AT ALL CLAMPING BAR JOINTS (3mm GAPS TYPICALLY) - TREMSIL 600 (BLACK)

AIRSEALS : PURLIN TO RAFTER NOTCH - TREMCO TRS-600  
 ALUMINUM FLASHINGS PERIMETER SEAL @ CURB - TREMCO TRS-600  
 150mm LAP JOINTS AT ALL INTERIOR & EXTERIOR FLASHINGS - TREMCO TRS-600  
 RAFTER CONNECTIONS INTO CURB-SILL NOTCH - TREMCO TRS-600

BACKER ROD : CLOSED CELL POLYETHYLENE ROPE BACK-UP WHERE JOINT BACK-UP IS REQUIRED (TREMCO "SOF" ROD RECOMMENDED)

SETTING BLOCKS : 5mm THK. HARD NEOPRENE BLOCKS 75mm LG. LOCATED AT 1/4 PTS. ON THE DOWNSLOPE SIDE OF GLASS UNITS.

GLAZING : 33mm O/A THK. SEALED UNIT (TYP.)  
 -C/O EXT: 6mm CLEAR TEMPERED W/ VE-2M LOW E ON #2  
 13mm BLACK NON-CONDUCTIVE SPACER + ARGON  
 LAMINATED 6mm CLEAR H/S W/ 1.5mm PVB (CUSTOM COLOUR) & 6mm CLEAR H/S

SEPARATION OF DISSIMILAR MATERIALS : TO BE ACCOMPLISHED THRU THE USE OF NEOPRENE/PVC SHIMS OR BITUMINOUS PAINT APPLIED IN THE FIELD.

HARDWARE : SELF TAPPING SCREWS, MACHINE BOLTS/NUTS AND SELF DRILLING FASTENERS TO BE STAINLESS STEEL OR DOUBLE CADMIUM PLATED FOR STRENGTH REASONS TO AVOID SHEARING IN SOME LOCATIONS (SPECIFICALLY TEKS AND PURLINS SCREWS)

FINISH : .0007 CLEAR ANODIZED (INT. & EXT.)

NOT IN IBG'S CONTRACT :

- MEMBRANES & VAPOUR BARRIERS
- SHIMS/BITUMINOUS PAINT
- FIELD ERECTION/LABOUR
- ALL BUILT-UP PERIMETER MATERIALS
- ROOFER'S FLASHINGS & FELTS
- STRUCTURAL STEEL SUPPORT
- GLASS, GLASS SETTING BLOCKS

ALL BUILT-UP CURBS AND STRUCTURAL STEEL TO HAVE SUFFICIENT STRENGTH AND RIGIDITY TO WITHSTAND FORCES EXERTED BY SKYLIGHT FRAMING, GLASS AND LOADS

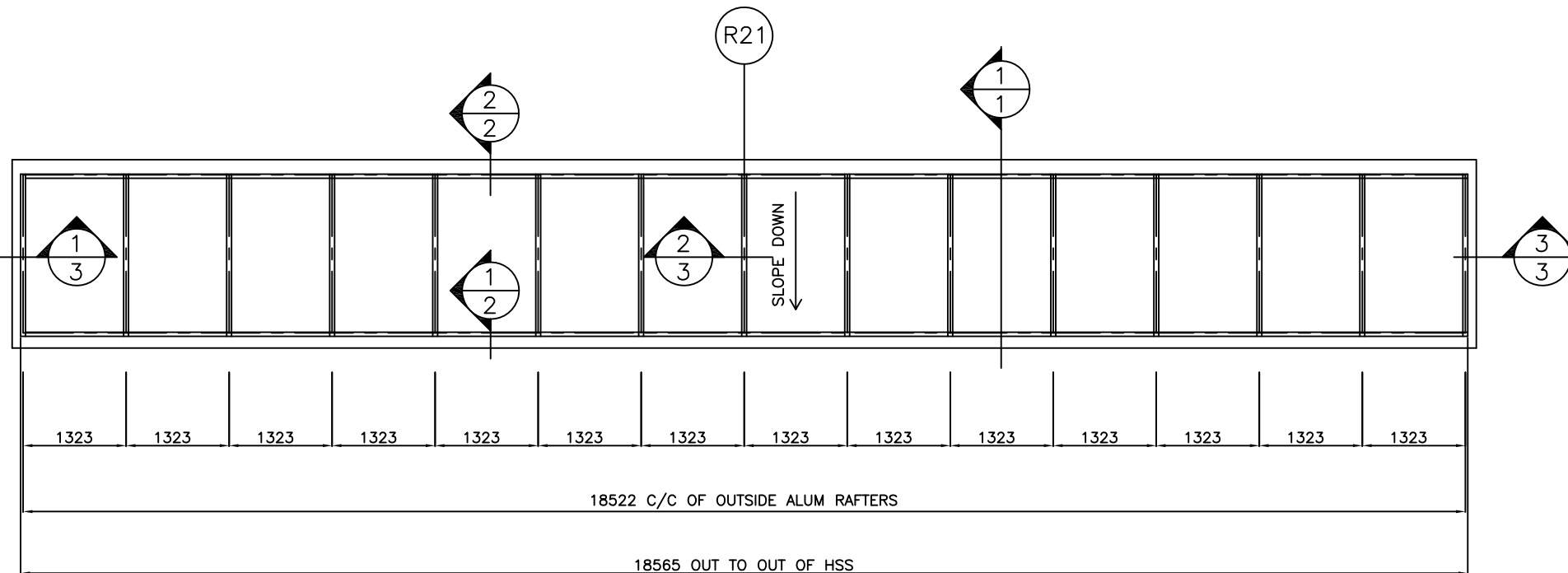
OCT/08	DWGS FOR FABRICATION	MMS
APR/08	REACTION FORCES	MMS
NOV/07	REV'D GLASS THICKNESS	MMS
OCT/07	WITH ENGINEER'S STAMP	MMS
MAY/07	SUBMITTED FOR APPROVAL	MMS
DATE:	REVISION	BY:

ALL DRAWINGS, DESIGNS, SPECIFICATIONS AND COPIES FURNISHED BY IBG CANADA LTD. ARE AND SHALL REMAIN AS ITS EXCLUSIVE PROPERTY AND ARE NOT TO BE USED ON ANY OTHER PROJECT OR REPRODUCED, COPIED, ALTERED AND MODIFIED IN WHOLE OR IN PART AND FOR WHATEVER PURPOSE INTENDED WITHOUT THE WRITTEN CONSENT OF THE OWNER (IBG CANADA LTD.). THEY ARE TO BE RETURNED TO IBG CANADA LTD. UPON REQUEST OR UPON THE COMPLETION OF THE PROJECT.

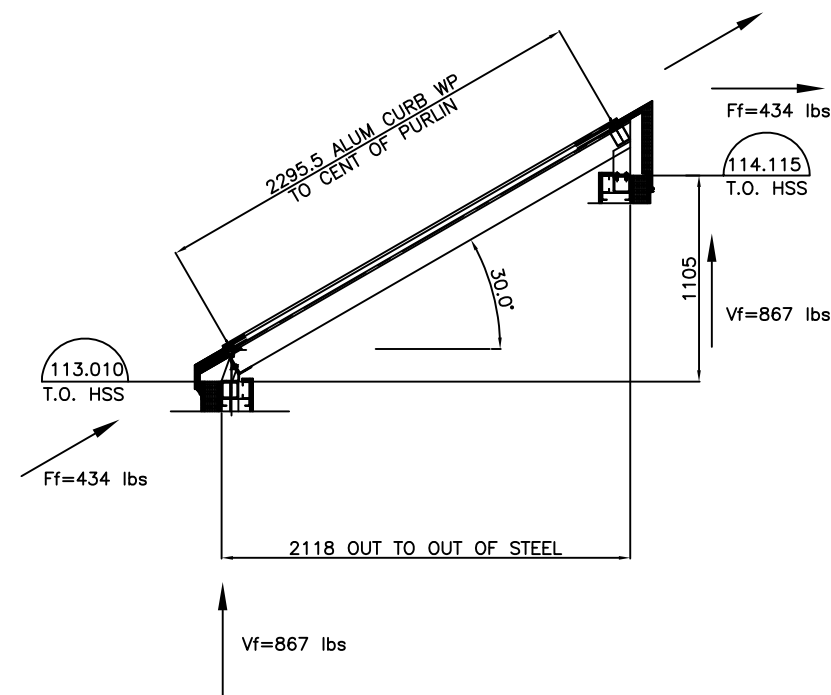
4278 Bartlett Road  
 Beamsville, Ontario  
 LOR-1B1  
**I.B.G. CANADA LTD.** Phone #: (905) 563-8276  
 Advanced Glass Structure Specialists Fax #: (905) 563-8011

IBG CANADA LTD. ASSUMES NO RESPONSIBILITY AS TO MEASUREMENTS OR DETAIL AFFECTING ANY WORK BUT ITS OWN AND IS NOT RESPONSIBLE FOR ANY ERRORS OCCURRING THROUGH THE USE OF THESE DRAWINGS BY OTHER PARTIES.

PROJECT	PROJECT	
LOCATION	LOCATION	
ARCHITECT	ARCHITECT	
CUSTOMER	CUSTOMER	
DESCRIPTION	ROOF PLAN & SECTION	
DATE:	DATE	IBG PROJ. # PROJ. #
SCALE:	NTS	DWG No. 1



**ROOF PLAN**

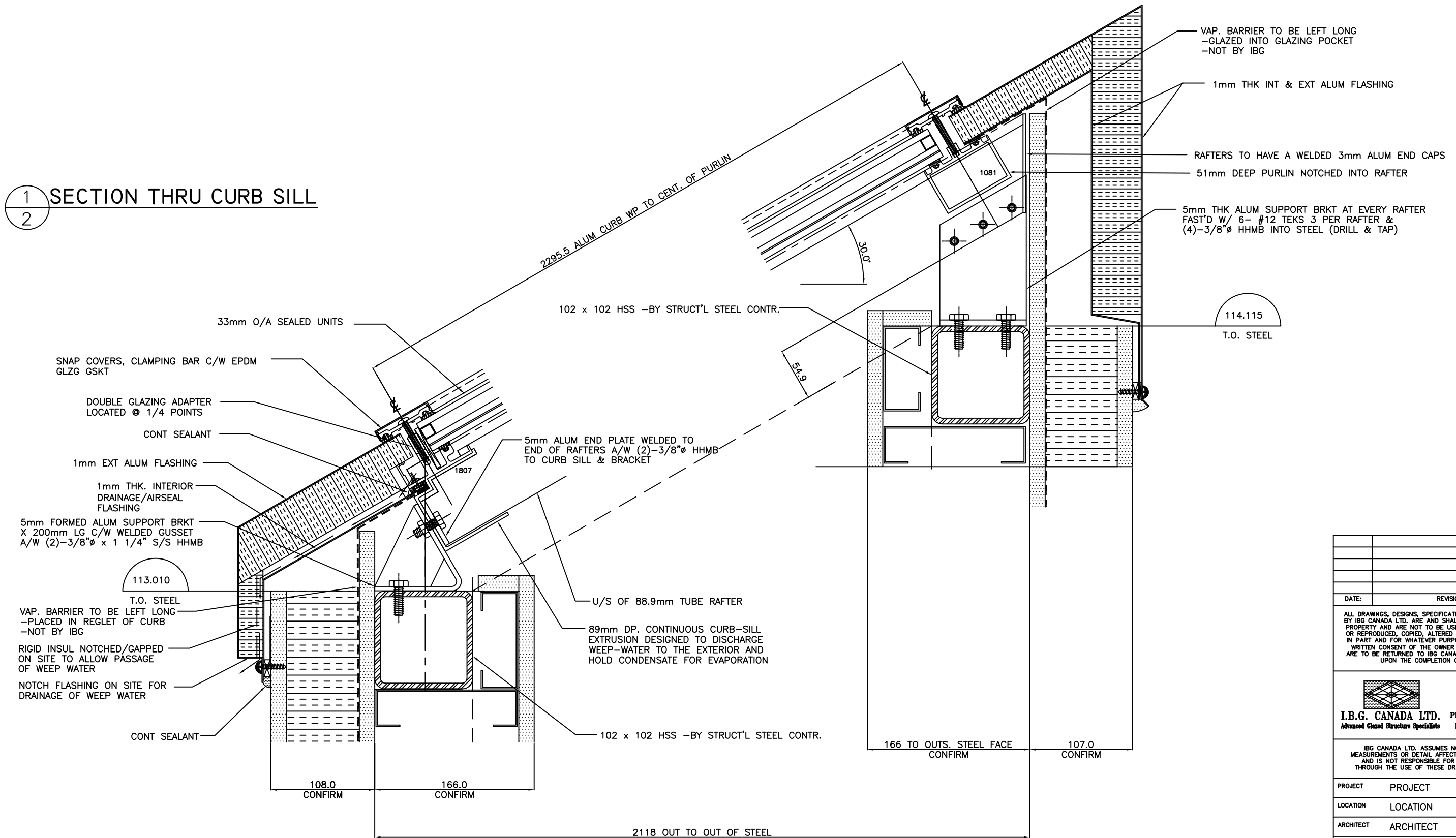


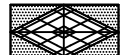
**SECTION THRU SKYLIGHT**

CONTRACTOR TO VERIFY OR SUPPLY ALL DIMENSIONS RELATING TO SKYLIGHTS SO FIRM FABRICATION GEOMETRY CAN BE ESTABLISHED

2 SECTION THRU HEAD

1 SECTION THRU CURB SILL



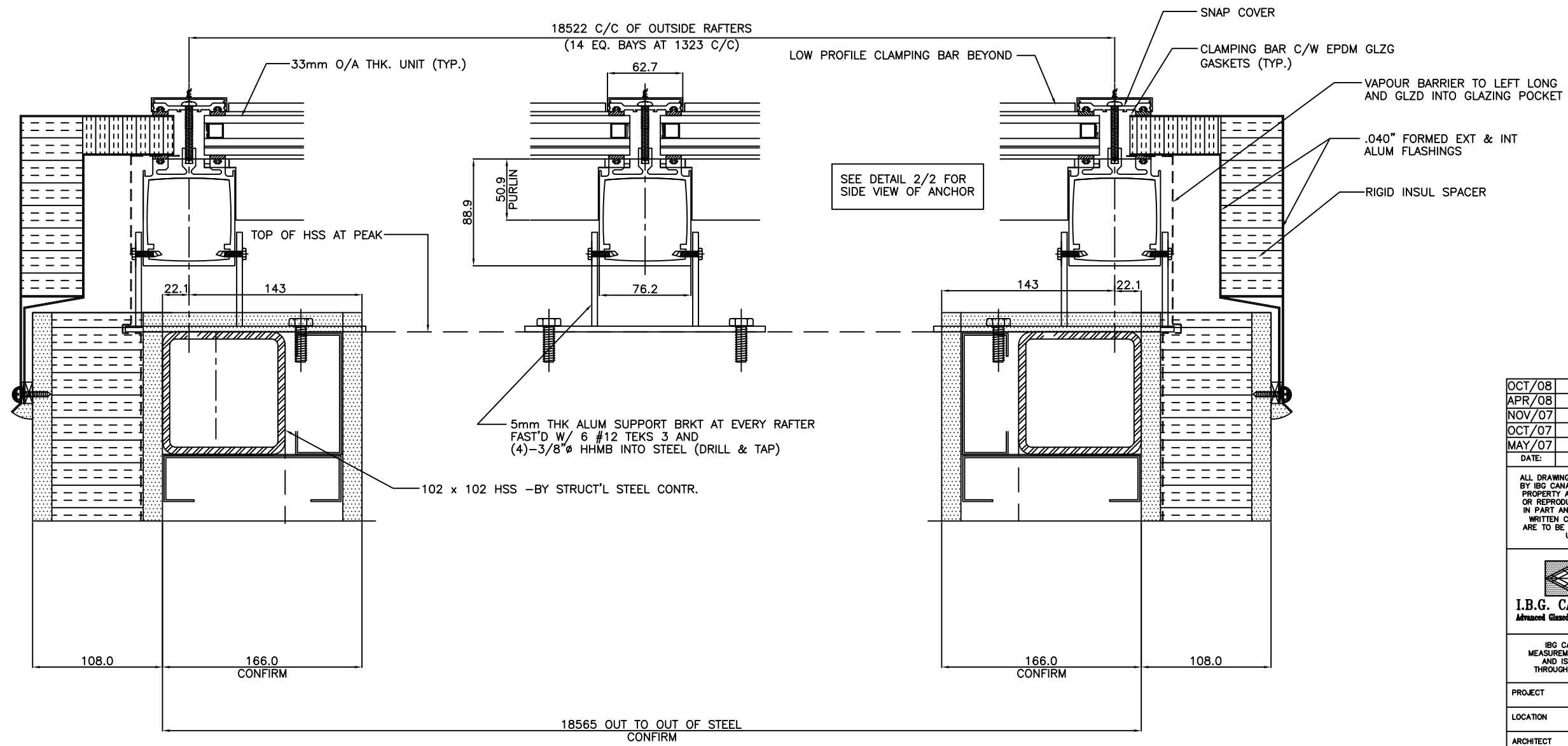
DATE:	REVISION	BY:
<p>ALL DRAWINGS, DESIGNS, SPECIFICATIONS AND COPIES FURNISHED BY I.B.G. CANADA LTD. ARE AND SHALL REMAIN AS ITS EXCLUSIVE PROPERTY AND ARE NOT TO BE USED ON ANY OTHER PROJECT OR REPRODUCED, COPIED, ALTERED AND MODIFIED IN WHOLE OR IN PART AND FOR WHATEVER PURPOSE INTENDED WITHOUT THE WRITTEN CONSENT OF THE OWNER (I.B.G. CANADA LTD.). THEY ARE TO BE RETURNED TO I.B.G. CANADA LTD. UPON REQUEST OR UPON THE COMPLETION OF THE PROJECT.</p>		
		<p>4278 Bartlett Road Beamsville, Ontario L0R-1B1</p>
<p><b>I.B.G. CANADA LTD.</b> Phone #: (905) 563-8278 Advanced Glass Structure Specialists Fax #: (905) 563-8011</p>		
<p>I.B.G. CANADA LTD. ASSUMES NO RESPONSIBILITY AS TO MEASUREMENTS OR DETAIL AFFECTING ANY WORK BUT ITS OWN AND IS NOT RESPONSIBLE FOR ANY ERRORS OCCURRING THROUGH THE USE OF THESE DRAWINGS BY OTHER PARTIES.</p>		
PROJECT	PROJECT	
LOCATION	LOCATION	
ARCHITECT	ARCHITECT	
CUSTOMER	CUSTOMER	
DESCRIPTION	DETAILS	
DATE:	DATE	DRAWN BY: N/A I.B.G. PROJ. # PROJ. #
SCALE:	1:2	CHECKED BY: DWG No. 2

1 SECTION THRU JAMB RAFTER

2 SECTION THRU MID RAFTER

3 SECTION THRU JAMB RAFTER

R21



OCT/08	DWGS FOR FABRICATION	MMS
APR/08	ADDED VAPOUR BARRIER	MMS
NOV/07	REV'D GLASS THICKNESS	MMS
OCT/07	WITH ENGINEER'S STAMP	MMS
MAY/07	SUBMITTED FOR APPROVAL	MMS
DATE:	REVISION	BY:

ALL DRAWINGS, DESIGNS, SPECIFICATIONS AND COPIES FURNISHED BY I.B.G. CANADA LTD. ARE AND SHALL REMAIN AS ITS EXCLUSIVE PROPERTY AND ARE NOT TO BE USED ON ANY OTHER PROJECT OR REPRODUCED, COPIED, ALTERED AND MODIFIED IN WHOLE OR IN PART AND FOR WHATEVER PURPOSE INTENDED WITHOUT THE WRITTEN CONSENT OF THE OWNER (I.B.G. CANADA LTD.). THEY ARE TO BE RETURNED TO I.B.G. CANADA LTD. UPON REQUEST OR UPON THE COMPLETION OF THE PROJECT.

4278 Bartlett Road  
Beamsville, Ontario  
L0R-1B1  
**I.B.G. CANADA LTD.** Phone #: (905) 563-8276  
Advanced Glazed Structure Specialists Fax #: (905) 563-8011

I.B.G. CANADA LTD. ASSUMES NO RESPONSIBILITY AS TO MEASUREMENTS OR DETAIL AFFECTING ANY WORK BUT ITS OWN AND IS NOT RESPONSIBLE FOR ANY ERRORS OCCURRING THROUGH THE USE OF THESE DRAWINGS BY OTHER PARTIES.

PROJECT	PROJECT	
LOCATION	LOCATION	
ARCHITECT	ARCHITECT	
CUSTOMER	CUSTOMER	
DESCRIPTION	DETAILS	
DATE:	DATE	IBG PROJ. # PROJ. #
SCALE:	1:2	DWG No. 3