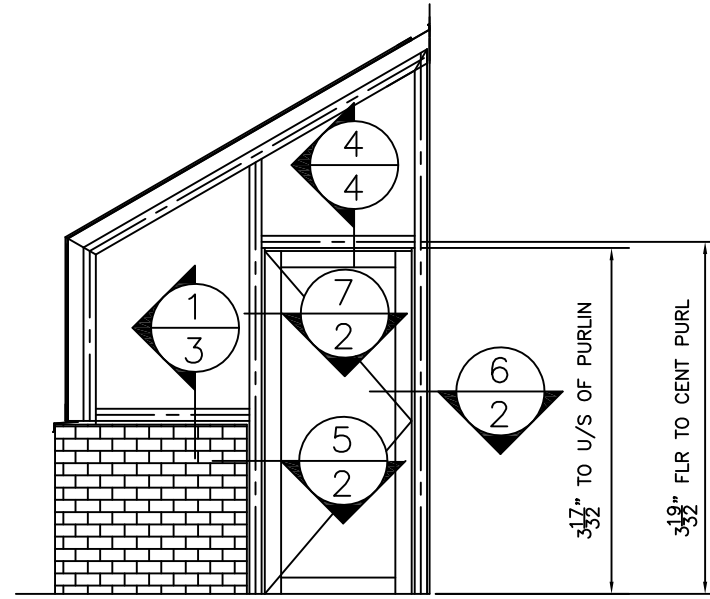
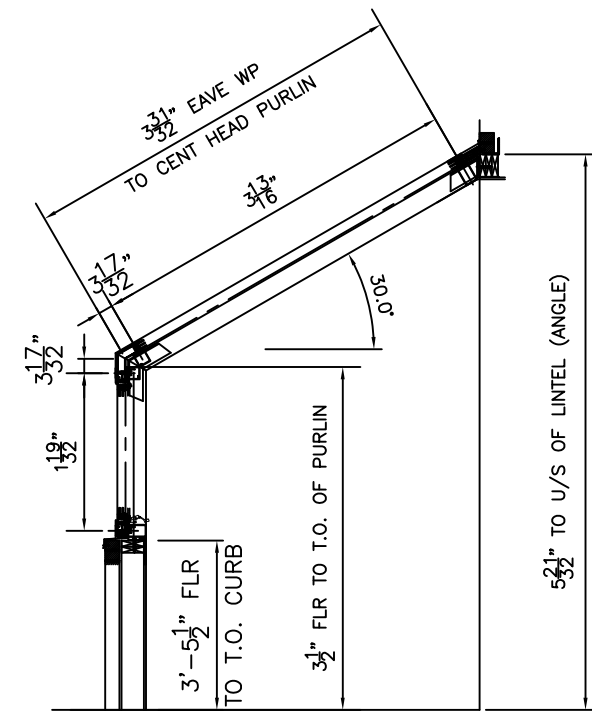


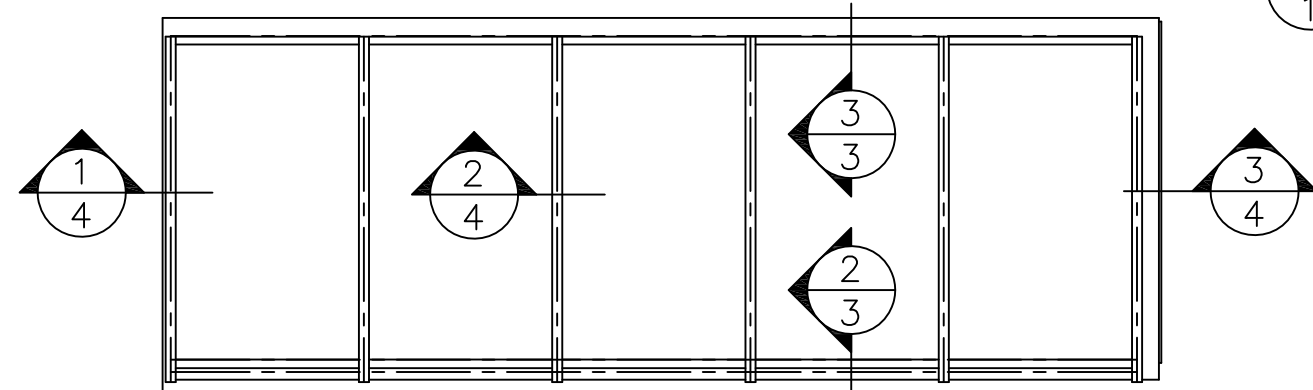
FRONT ELEVATION



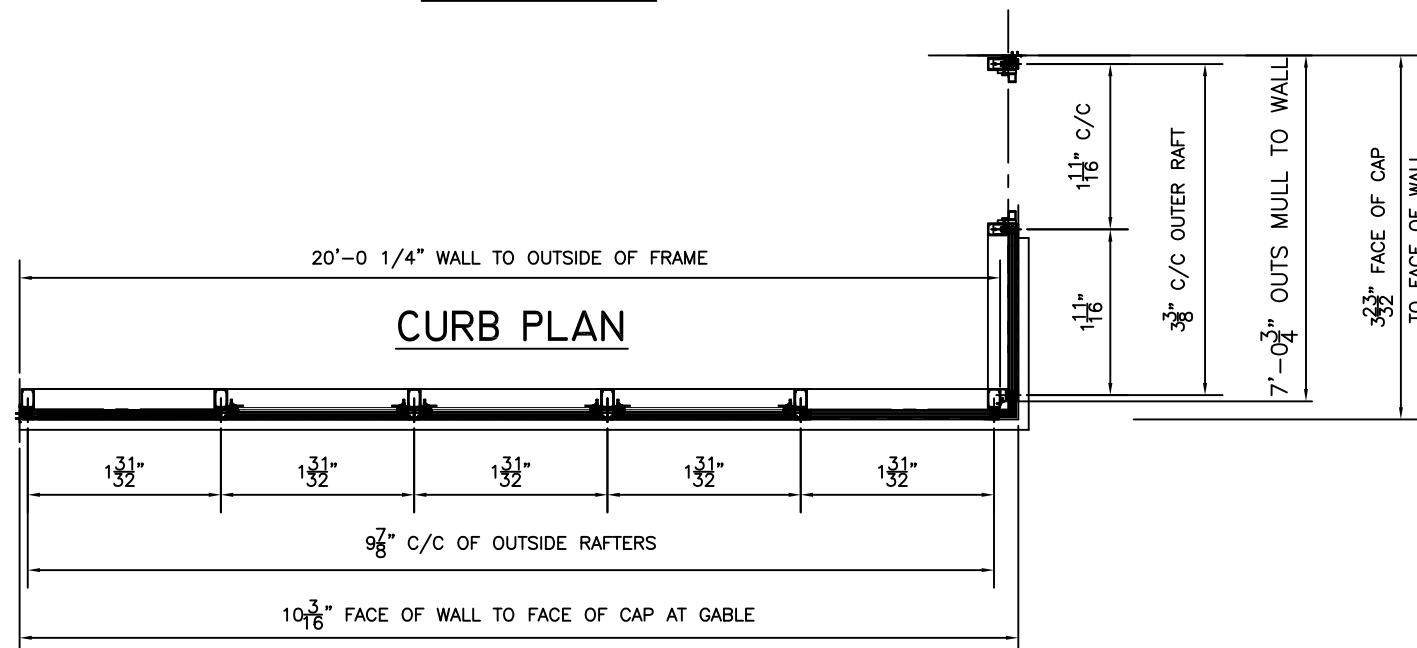
ELEV OF VERTICAL GABLE



SECT THRU SOLARIUM



ROOF PLAN



CURB PLAN

- NOT IN IBG'S CONTRACT :
- 1 3/4" O/A SEALED GLASS UNITS
 - ALL BUILT UP SILL CURBS & MATERIALS
 - GLASS SETTING BLOCKS
 - AIR VAPOUR MEMBRANES, ROOFING MAT'LS
 - FIELD ERECTION/LABOUR
 - CAULKING, BACKER RODS, SHIMS
 - INTERNAL SILL COPINGS OR DRIP PANS
 - DOOR & DOOR COMPONENTS
 - VENTS & HARDWARE

BUILT-UP CURBS (NOT BY IBG) TO HAVE SUFFICIENT STRENGTH & RIGIDITY TO WITHSTAND THE FORCES EXERTED BY SKYLIGHTS

CONTRACTOR TO VERIFY OR SUPPLY ALL DIMENSIONS RELATING TO SKYLIGHTS SO FIRM FABRICATION GEOMETRY CAN BE ESTABLISHED

GENERAL NOTES

- ALUMINUM : EXTRUDED ALLOY 6063-T5 & 6 FOR FRAMING MEMBERS, CLAMPING BARS, ETC. BASE PLATES, LUGS, FLASHINGS, ETC. TO BE 5005-H14 ANODIZING QUALITY (WHERE EXPOSED TO MATCH SKYLIGHT FINISH).
- GLAZING GASKETS : EXTRUDED EPDM GASKETS (BLACK) FOR INT. & EXT. SEALS @ SNAP CAPS
- GLAZING TAPE : TREMCO .150 X 3/8 X 1/8" POLYSHIM AT HORIZONTAL LOW PROFILE CLAMPS
- SEALANT : MEDIUM MODULUS, NEUTRAL CURE SILICONE SEALANT FOR GENERAL USE & AT ALL CLAMPING BAR JOINTS (1/8" GAPS TYPICALLY) - TREMCO TREMSIL 600
- AIRSEALS : PURLIN TO RAFTER NOTCH - 1/32" VHB TAPE
ALUMINUM FLASHINGS PERIMETER SEAL - TREMCO TREMSIL 600
6" LAP JOINTS AT ALL INTERIOR & EXTERIOR FLASHINGS - TREMCO TREMSIL 600
- BACKER ROD : CLOSED CELL POLYETHYLENE ROPE BACK-UP WHERE JOINT BACK-UP IS REQUIRED (TREMCO "SOF" ROD)
- SETTING BLOCKS : 3/16" THK. HARD NEOPRENE BLOCKS 3" LG. LOCATED AT 1/4 PTS. OF PURLINS - NOT BY IBG
- GLASS : 1 3/4" THK. O/A TRIPLE GLAZED UNITS - NOT BY IBG
- INSULATION : EXTRUDED RIGID POLYSTYRENE INSULATION IN THICKNESS REQUIRED TO SANDWICH INNER AND OUTER CLOSURE FLASHINGS - TO HAVE A COMPRESSIVE STRENGTH OF 20 PSI.
- SEPARATION OF DISSIMILAR MATERIALS : TO BE ACCOMPLISHED THRU THE USE OF NEOPRENE/PVC SHIMS OR BITUMINOUS PAINT APPLIED IN THE FIELD (NEITHER OF WHICH ARE BY I.B.G)
- HARDWARE : SELF TAPPING SCREWS, MACHINE BOLTS/NUTS AND SELF DRILLING FASTENERS TO BE STAINLESS STEEL OR DOUBLE CADMIUM PLATED FOR STRENGTH REASONS TO AVOID SHEARING IN SOME LOCATIONS (SPECIFICALLY TEKS AND PURLINS SCREWS)
- FINISH : EXPOSED INT. & EXT. COMPONENTS TO BE BLACK ANODIZED

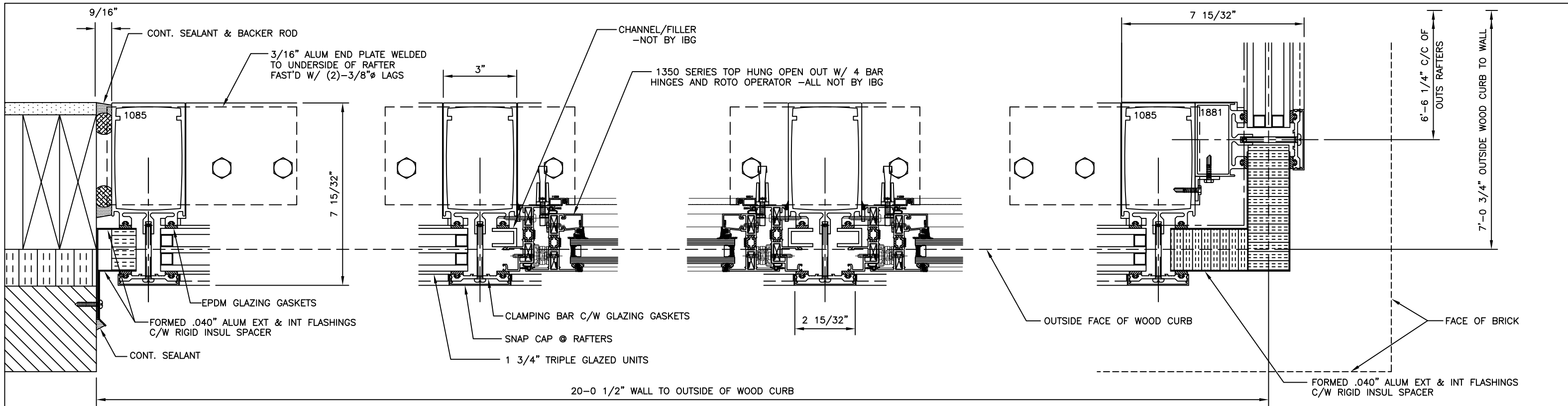
DATE:	REVISION	BY:

ALL DRAWINGS, DESIGNS, SPECIFICATIONS AND COPIES FURNISHED BY IBG CANADA LTD. ARE AND SHALL REMAIN AS ITS EXCLUSIVE PROPERTY AND ARE NOT TO BE USED ON ANY OTHER PROJECT OR REPRODUCED, COPIED, ALTERED AND MODIFIED IN WHOLE OR IN PART AND FOR WHATEVER PURPOSE INTENDED WITHOUT THE WRITTEN CONSENT OF THE OWNER (IBG CANADA LTD.). THEY ARE TO BE RETURNED TO IBG CANADA LTD. UPON REQUEST OR UPON THE COMPLETION OF THE PROJECT.

Head Office
4278 Bartlett Road, P.O. Box 398
Beamsville, Ontario, Canada L0R 1B0
Phone (905) 563-8276
Fax (905) 563-8011
sales@ibgcanada.ca
www.ibgcanada.ca

IBG CANADA LTD. ASSUMES NO RESPONSIBILITY AS TO MEASUREMENTS OR DETAIL AFFECTING ANY WORK BUT ITS OWN AND IS NOT RESPONSIBLE FOR ANY ERRORS OCCURRING THROUGH THE USE OF THESE DRAWINGS BY OTHER PARTIES.

PROJECT	PROJECT
LOCATION	LOCATION
ARCHITECT	ARCHITECT
CUSTOMER	CUSTOMER
DESCRIPTION	ELEVATIONS, PLANS & SECTIONS
DATE:	DATE
SCALE:	1/2" = 1'-0"
DRAWN BY:	N/A
CHECKED BY:	
IBG PROJ. #	PROJ. #
DWG No.	1



1 SECT @ JAMB
2 SCALE: 1:2

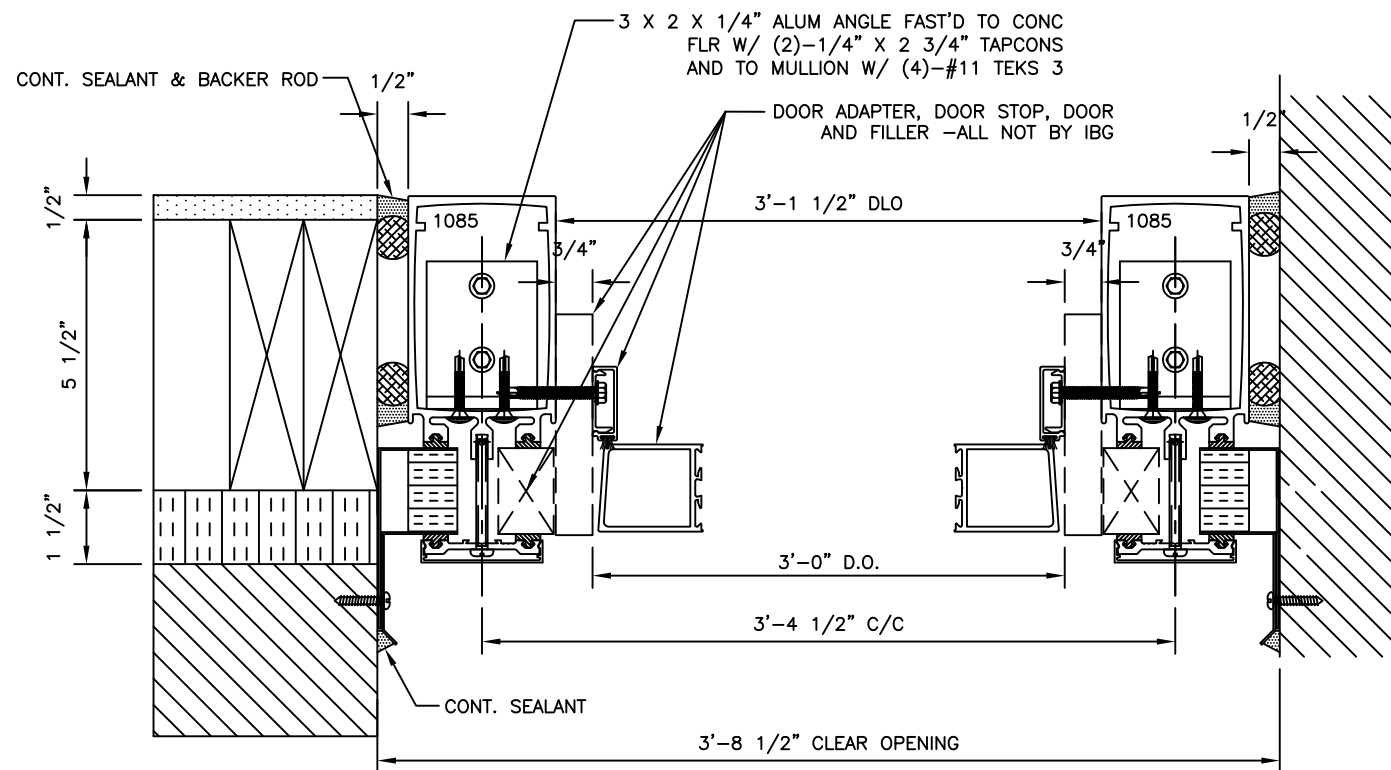
2 SECT @ MID MULLION
2 GLASS/VENT

3 SECT @ MID MULLION
2 VENT/VENT

4 SECT @ CORNER
2 SCALE: 1:2

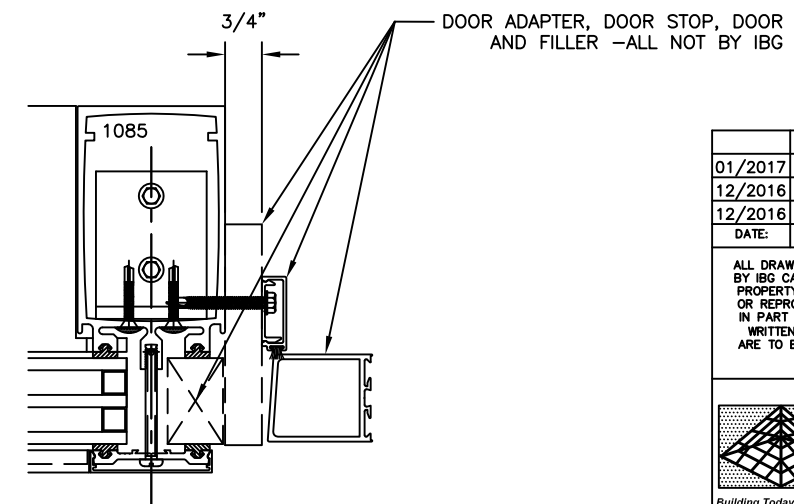
BUILT-UP CURBS (NOT BY IBG) TO HAVE SUFFICIENT STRENGTH & RIGIDITY TO WITHSTAND THE FORCES EXERTED BY SKYLIGHTS

CONTRACTOR TO VERIFY OR SUPPLY ALL DIMENSIONS RELATING TO SKYLIGHTS SO FIRM FABRICATION GEOMETRY CAN BE ESTABLISHED



5 SECT @ DOOR JAMB
2 SCALE: 1:2

6 SECT @ DOOR JAMB
2 SCALE: 1:2



7 SECT @ DOOR JAMB
2 SCALE: 1:2

01/2017	REVISED PER COMMENTS	MMS
12/2016	REVISED PER COMMENTS	MMS
12/2016	SUBMITTED FOR APPROVAL	MMS
DATE:	REVISION	BY:

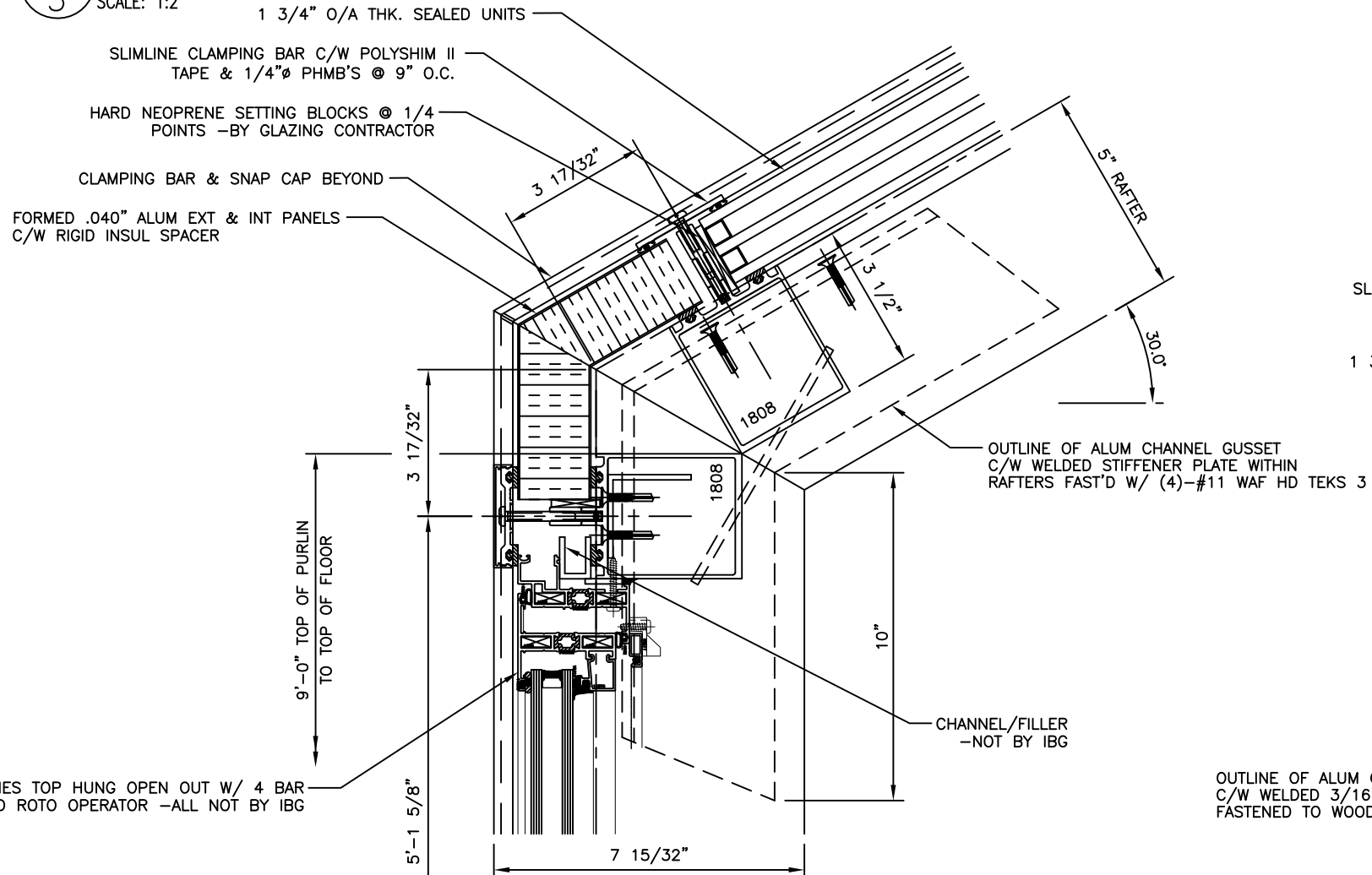
ALL DRAWINGS, DESIGNS, SPECIFICATIONS AND COPIES FURNISHED BY IBG CANADA LTD. ARE AND SHALL REMAIN AS ITS EXCLUSIVE PROPERTY AND ARE NOT TO BE USED ON ANY OTHER PROJECT OR REPRODUCED, COPIED, ALTERED AND MODIFIED IN WHOLE OR IN PART AND FOR WHATEVER PURPOSE INTENDED WITHOUT THE WRITTEN CONSENT OF THE OWNER (IBG CANADA LTD.). THEY ARE TO BE RETURNED TO IBG CANADA LTD. UPON REQUEST OR UPON THE COMPLETION OF THE PROJECT.



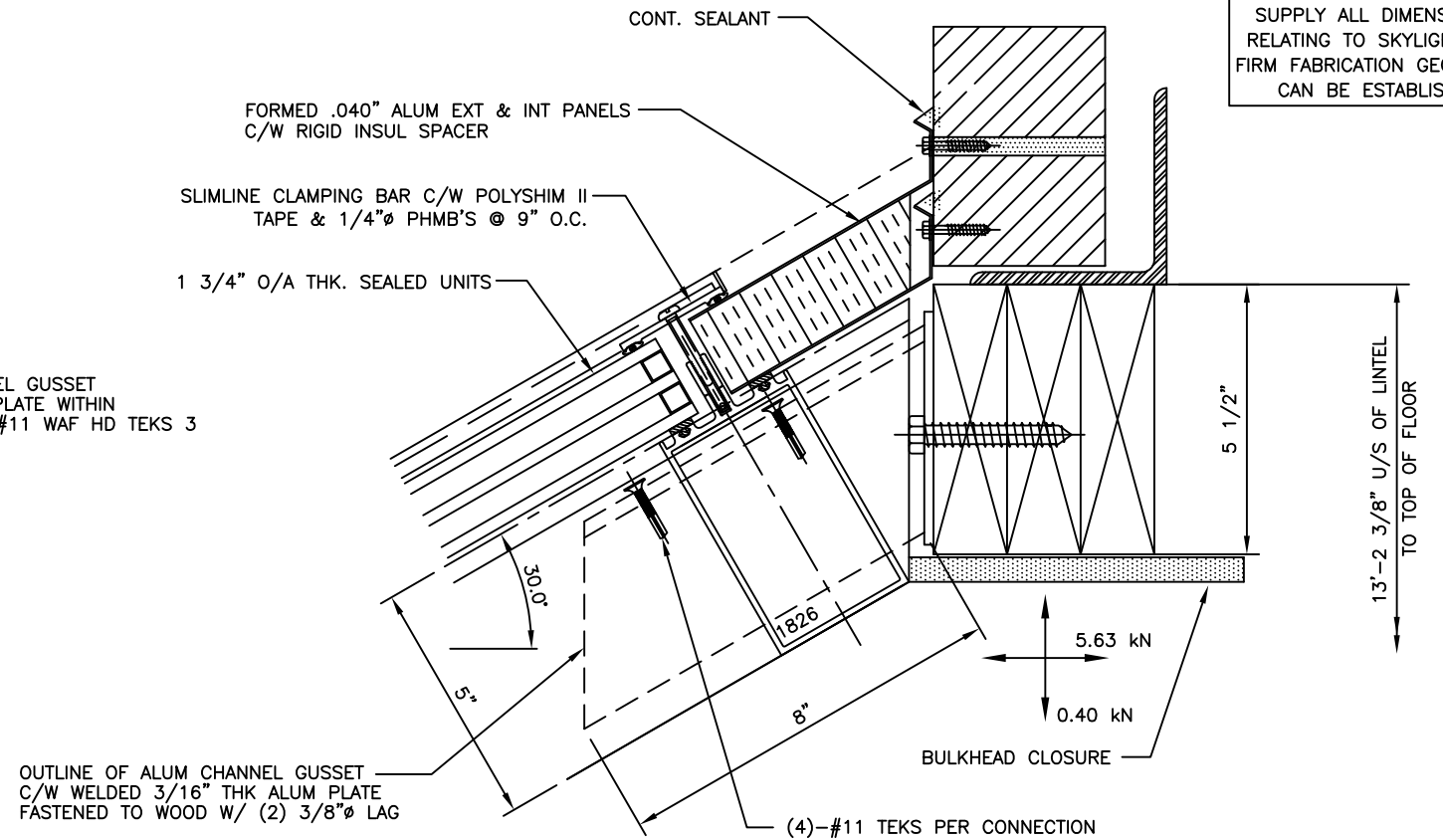
IBG CANADA LTD. ASSUMES NO RESPONSIBILITY AS TO MEASUREMENTS OR DETAIL AFFECTING ANY WORK BUT ITS OWN AND IS NOT RESPONSIBLE FOR ANY ERRORS OCCURRING THROUGH THE USE OF THESE DRAWINGS BY OTHER PARTIES.

PROJECT	PROJECT
LOCATION	LOCATION
ARCHITECT	ARCHITECT
CUSTOMER	CUSTOMER
DESCRIPTION DETAILS	
DATE:	DATE
SCALE:	1 : 2
DRAWN BY:	N/A
CHECKED BY:	
IBG PROJ. #	PROJ. #
DWG No.	2

2 SECT @ EAVE
 3 SCALE: 1:2



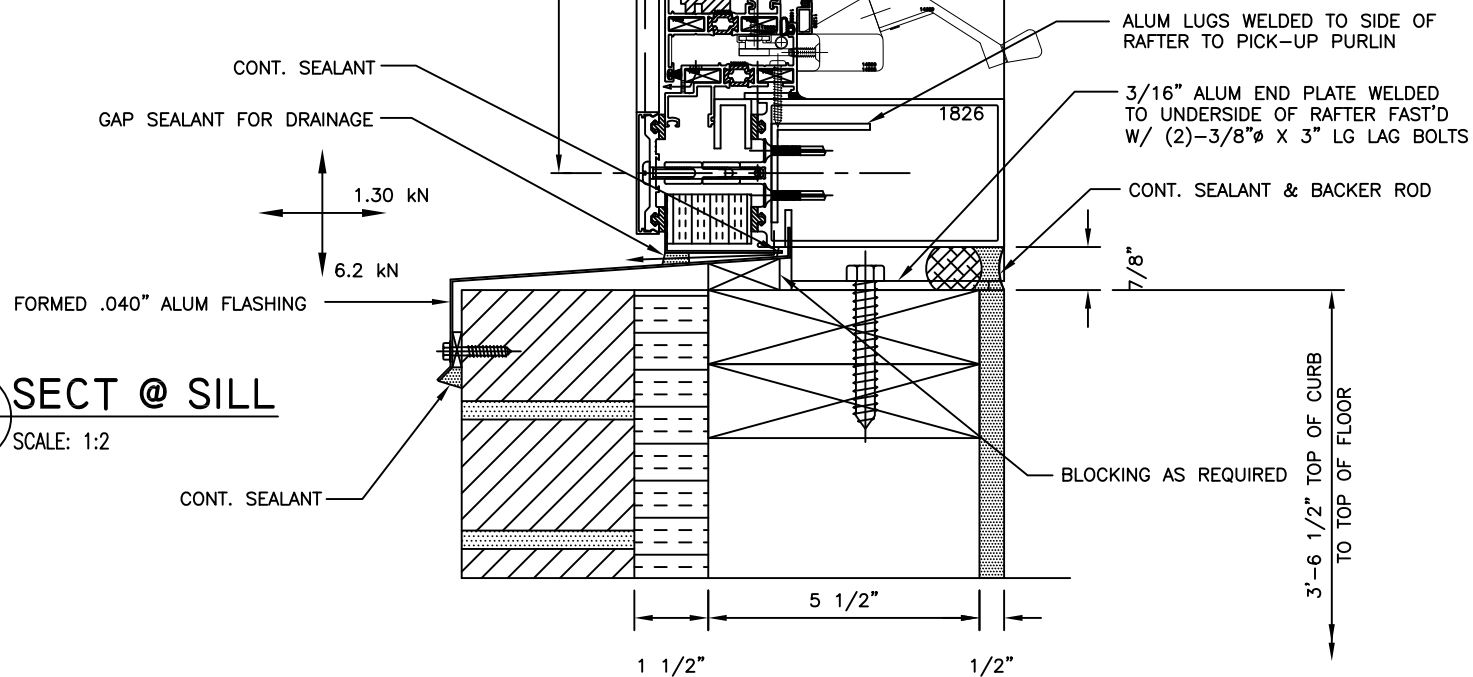
3 SECT @ HEAD
 3 SCALE: 1:2



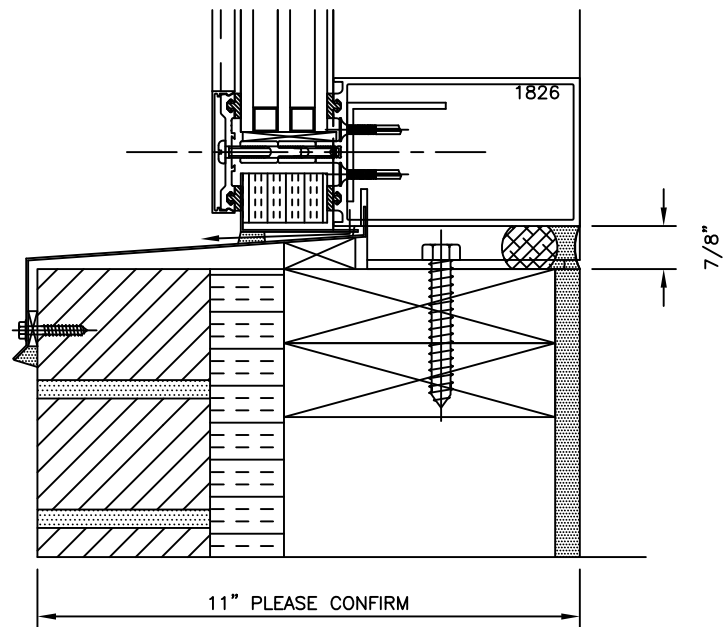
BUILT-UP CURBS (NOT BY IBG) TO HAVE SUFFICIENT STRENGTH & RIGIDITY TO WITHSTAND THE FORCES EXERTED BY SKYLIGHTS

CONTRACTOR TO VERIFY OR SUPPLY ALL DIMENSIONS RELATING TO SKYLIGHTS SO FIRM FABRICATION GEOMETRY CAN BE ESTABLISHED

1 SECT @ SILL
 3 SCALE: 1:2



4 SECT @ SILL
 3 SCALE: 1:2



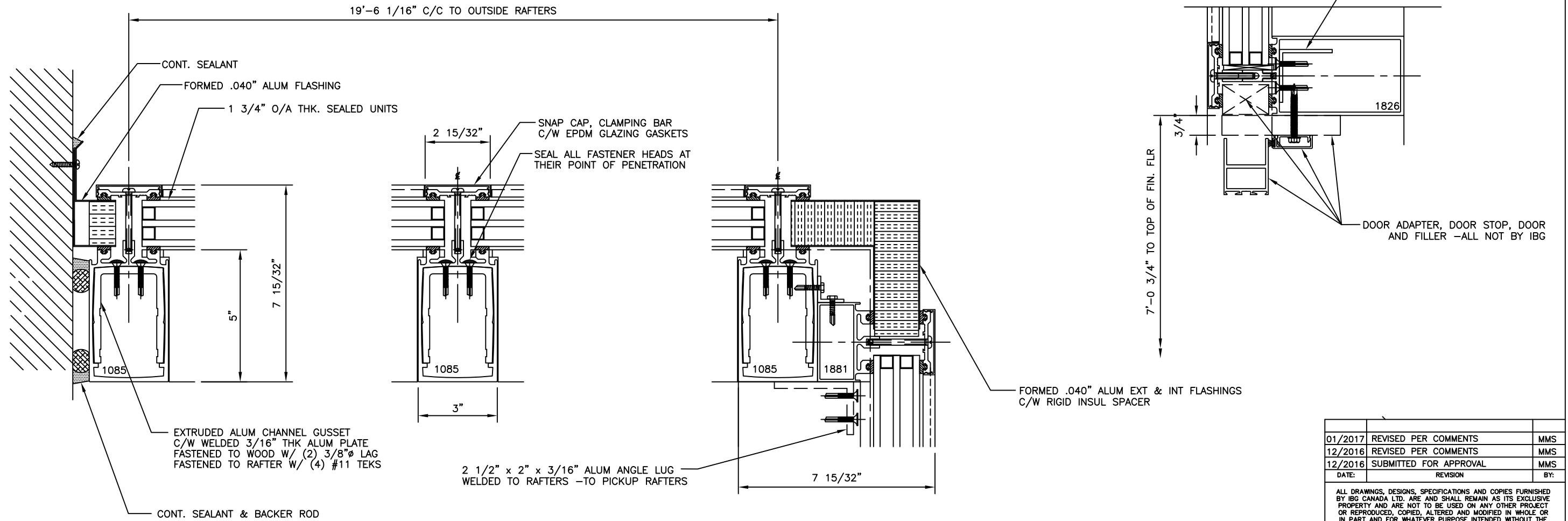
01/2017	REVISED PER COMMENTS	MMS
12/2016	REVISED PER COMMENTS	MMS
12/2016	SUBMITTED FOR APPROVAL	MMS
DATE:	REVISION	BY:
ALL DRAWINGS, DESIGNS, SPECIFICATIONS AND COPIES FURNISHED BY IBG CANADA LTD. ARE AND SHALL REMAIN AS ITS EXCLUSIVE PROPERTY AND ARE NOT TO BE USED ON ANY OTHER PROJECT OR REPRODUCED, COPIED, ALTERED AND MODIFIED IN WHOLE OR IN PART AND FOR WHATEVER PURPOSE INTENDED WITHOUT THE WRITTEN CONSENT OF THE OWNER (IBG CANADA LTD.). THEY ARE TO BE RETURNED TO IBG CANADA LTD. UPON REQUEST OR UPON THE COMPLETION OF THE PROJECT.		
Head Office 4278 Bartlett Road, P.O. Box 398 Beamsville, Ontario, Canada L0R 1B0 Phone (905) 563-8276 Fax (905) 563-8011 sales@ibgcanada.ca www.ibgcanada.ca Building Today, With the Technology of Tomorrow		
IBG CANADA LTD. ASSUMES NO RESPONSIBILITY AS TO MEASUREMENTS OR DETAIL AFFECTING ANY WORK BUT ITS OWN AND IS NOT RESPONSIBLE FOR ANY ERRORS OCCURRING THROUGH THE USE OF THESE DRAWINGS BY OTHER PARTIES.		
PROJECT	PROJECT	
LOCATION	LOCATION	
ARCHITECT	ARCHITECT	
CUSTOMER	CUSTOMER	
DESCRIPTION	DETAILS	
DATE:	DATE	DRAWN BY: N/A
SCALE:	1 : 2	CHECKED BY: DWG No. 3
IBG PROJ. #	PROJ. #	

1 SECT @ JAMB
4 SCALE: 1:2

2 SECT @ MID RAFTER
4 SCALE: 1:2

3 SECT @ TRANSITION
4 SCALE: 1:2

4 SECT @ DOOR HEAD
4 SCALE: 1:2



CONTRACTOR TO VERIFY OR
SUPPLY ALL DIMENSIONS
RELATING TO SKYLIGHTS SO
FIRM FABRICATION GEOMETRY
CAN BE ESTABLISHED

01/2017	REVISED PER COMMENTS	MMS
12/2016	REVISED PER COMMENTS	MMS
12/2016	SUBMITTED FOR APPROVAL	MMS
DATE:	REVISION	BY:

ALL DRAWINGS, DESIGNS, SPECIFICATIONS AND COPIES FURNISHED BY IBG CANADA LTD. ARE AND SHALL REMAIN AS ITS EXCLUSIVE PROPERTY AND ARE NOT TO BE USED ON ANY OTHER PROJECT OR REPRODUCED, COPIED, ALTERED AND MODIFIED IN WHOLE OR IN PART AND FOR WHATEVER PURPOSE INTENDED WITHOUT THE WRITTEN CONSENT OF THE OWNER (IBG CANADA LTD.). THEY ARE TO BE RETURNED TO IBG CANADA LTD. UPON REQUEST OR UPON THE COMPLETION OF THE PROJECT.

IBG CANADA LTD
 Head Office
 4278 Bartlett Road, P.O. Box 398
 Beamsville, Ontario, Canada L0R 1B0
 Phone (905) 563-8276
 Fax (905) 563-8011
 sales@ibgcanada.ca
 www.ibgcanada.ca

Building Today, With the Technology of Tomorrow

IBG CANADA LTD. ASSUMES NO RESPONSIBILITY AS TO MEASUREMENTS OR DETAIL AFFECTING ANY WORK BUT ITS OWN AND IS NOT RESPONSIBLE FOR ANY ERRORS OCCURRING THROUGH THE USE OF THESE DRAWINGS BY OTHER PARTIES.

PROJECT	PROJECT	
LOCATION	LOCATION	
ARCHITECT	ARCHITECT	
CUSTOMER	CUSTOMER	
DESCRIPTION	DETAILS	
DATE:	DATE	IBG PROJ. # PROJ. #
SCALE:	1 : 2	DWG No. 4